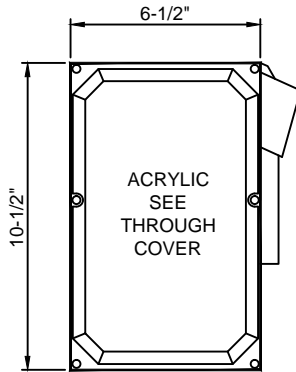
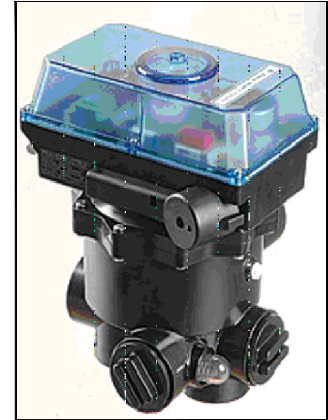


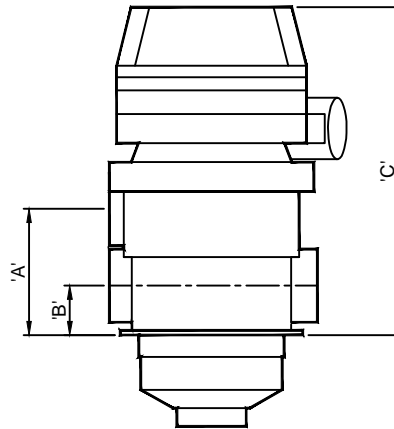


(877) 794-1802

## RAB SERIES, AUTO-BACKWASH CONTROL



TOP VIEW



ELEVATION

TECHNICAL DATA				
MODEL No.	MULTI-PORT CONN.	DIM 'A'	DIM 'B'	DIM 'C'
RAB-SFS-ASS-E3001F	1-1/2"	4"	1-1/2"	10-1/2"
RAB-SFS-ASS-E3002F	2"	6-9/16"	2-1/4"	12-1/8"

**SPECIFICATION DATA:** Automatic Backwash Valve; timer controlled (analog 7 day 24 hour programmable timer) system which has the actuator and the controller in one enclosure. An integrated touch pad switch allows the operator to perform standard switching tasks on the unit (Backwash/Rinse Cycle, Drain, Pump Shut Off, auto). The internally controlled pump relay (max. 6.3 Amp) controls the recirculation pump's on/off sequence during the valve's backwash and rinse functions. An external pump contactor must be provided by installer (24V signal will provide operation). The auxiliary circuit available is a double throw relay, which can be used for external ball valve control (open make up water valves during backwashing, close backwash line during filtration) heater and chemical feeder control (off during backwashing) or system monitoring through PLC's. Actuator is equipped with field adjustable potentiometers to set the backwash and rinse times.

**NOTE:** Due to our continuing product improvement, Roman Fountains reserves the right to change the specifications without notice.

**FEATURES:**

- Timer controlled activation of backwash.
- Adjustable (1 min - 11 min.) backwash
- Adjustable (20 sec. - 4 min.) rinse.
- Water and chemical resistant pad switch.
- On - off pump control circuit.
- Auxillary equipment circuit available.
- Low water cut off circuit.
- Tandum Wiring Feature (Master/Slave) for Multi-tanks

DRAWING NO.  
**6.106**