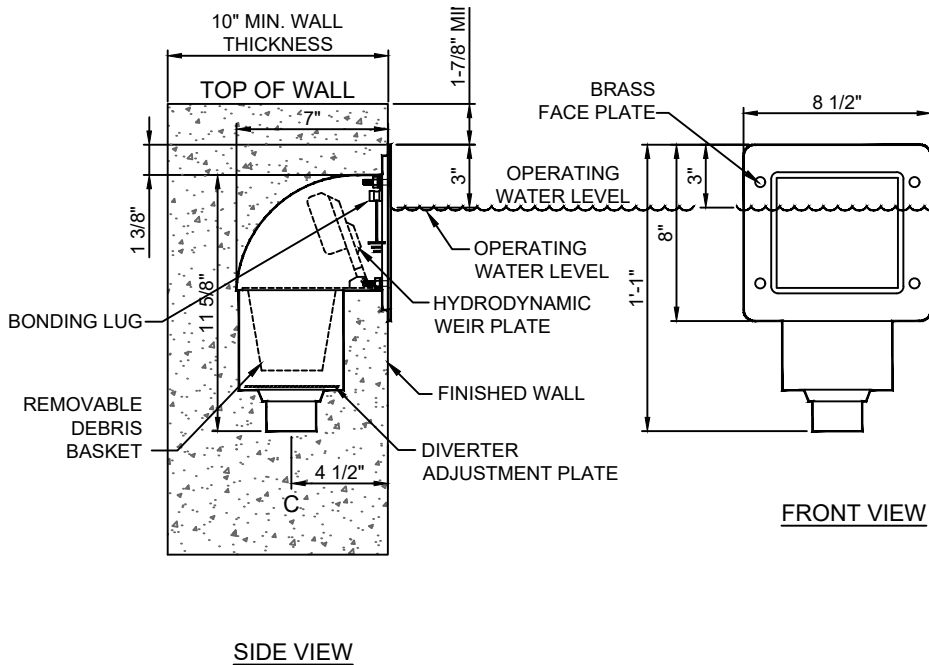
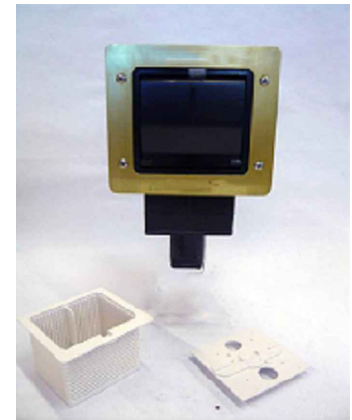




(877) 794-1802

**RPS-150-FA**  
**FRONT ACCESS SKIMMER**



| TECHNICAL AND HYDRAULIC DATA |                 |                   |
|------------------------------|-----------------|-------------------|
| MODEL                        | CONNECTION SIZE | MAXIMUM FLOW RATE |
| RPS-150-FA                   | 1-1/2" SLIP     | 30 GPM            |

**SPECIFICATION DATA :** Front Access Surface Skimmer, body of injection molded black cyclac with removable floating weir/basket assembly; diverter adjustment plate; natural finish brass faceplate; stainless steel fasteners and 1-1/2" SLIP connection.

**NOTE:** Due to our continuing product improvement, Roman Fountains reserves the right to change the specifications without notice.

**INSTALLATION:** Install front access skimmer into the pool wall in the direction and location shown on installation drawings. Run specified type and size piping (as shown on piping schematics) from filter suction system and connect to bottom of skimmer using proper pipe fittings. Place skimmer basket into skimmer body and insure that weir plate moves freely with no resistance in either direction. Do not remove weir plate, or skimmer will not function properly.

**MAINTENANCE:** Periodically check skimmer basket for debris buildup and remove and clean as necessary. Periodically check skimmer weir plate for obstructions to insure it is floating freely. Do not operate filter system without skimmer basket in place or pump damage may result. SHUT OFF FILTER PUMP BEFORE CLEANING SKIMMER, TO PREVENT INJURY.

**DESIGN/APPLICATION DATA:** Roman Fountains RPS-150-FA, front access skimmer is designed for use in fountains and reflecting pools as a secondary filter system return point and strainer device to skim debris from the pool surface before settling occurs. Its "front access" design allows for discrete installation and removal of the skimmer basket.

**DRAWING NO.**  
**6.301**