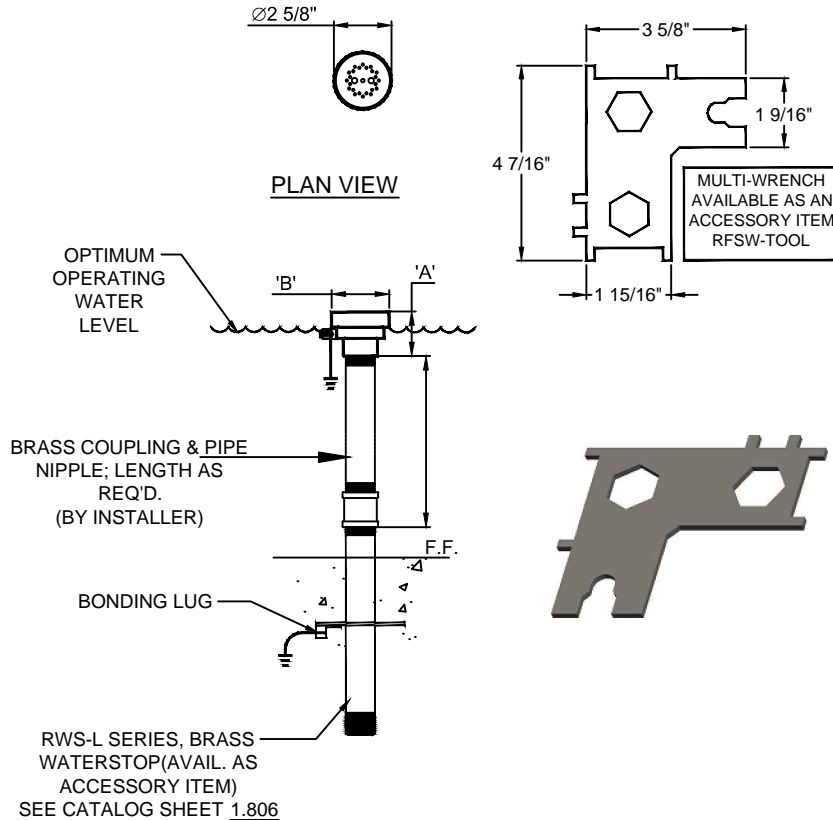




(877) 794-1802

RJC-100, JET CLUSTER NOZZLE



OPERATING DATA:

NOISE: _____ Low to Medium
 VISIBILITY: _____ Medium
 SPLASH/MIST: _____ Medium
 WIND STABILITY: _____ Low
 AERATION QUALITY: _____ Medium



3D IMAGE

RJC-100
 (24 STREAMS @ 7/64" ORIFICE)
 (1 STREAM @ 5/32" ORIFICE)

ELEVATION

SPECIFICATION DATA: RJC-100 Jet Cluster Nozzle; machined brass and bronze construction, machined brass jets, removable top for easy cleaning and 1" (F) N.P.T. threaded connection. (Optional alignment swivel available; see catalog sheet 1.802)

DESIGN/APPLICATION DATA: RJC100 nozzle produces a vertical column of water using concentric rings of precision machined orifices giving the appearance of a larger diameter water column.

- NOTES:** 1. Fine screening at pump, half the diameter of jet orifice or smaller to minimize nozzle clogging recommended.
 2. Due to continuing product improvement program, Roman Fountains reserves the right to change the specifications without notice.

TECHNICAL AND HYDRAULIC DATA									
DIMENSIONS				SPRAY HEIGHT/PERFORMANCE					
MODEL NO.	DIM. 'A'	DIM. 'B'	(F) N.P.T.	SPRAY HEIGHT	2'	3'	4'	5'	6'
RJC-100	2"	2 5/8"	1"	GPM	10	12	14	15	16
				HEAD	4'	6'	8'	9'	11'

DRAWING NO.
1.110