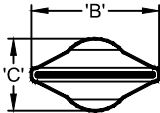




(877) 794-1802

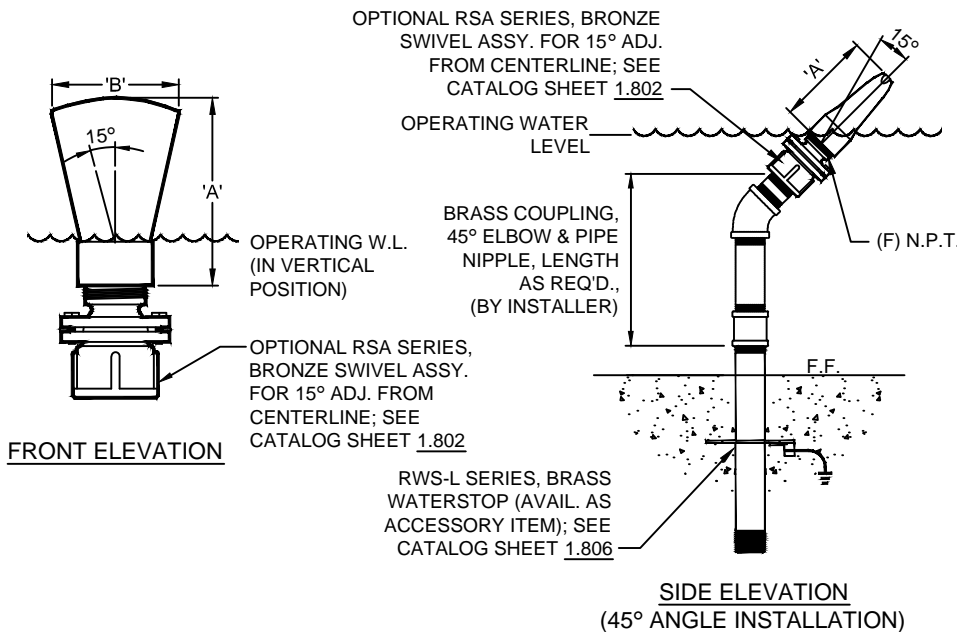
RFJ-100, FAN JET NOZZLE



PLAN VIEW

OPERATING DATA:

NOISE: _____ Low
 VISIBILITY: _____ Low
 SPLASH/MIST: _____ Medium
 WIND STABILITY: _____ Low
 AERATION QUALITY: _____ Low



3D IMAGE

SPECIFICATION DATA: Fan Jet Nozzle constructed of machined cast bronze with 1" (F) N.P.T. female threaded connection. (Optional alignment swivel available; consult factory).

DESIGN/APPLICATION DATA: RFJ-100, Fan Jet Nozzle produces a clear, translucent fan-shaped display. Ideal when angled to 45 degrees and used as a perimeter effect in a wind free location.

- NOTES:**
1. Fine screening at pump, half the width of the nozzle opening or smaller opening, to minimize nozzle clogging is recommended.
 2. Due to continuing product improvement program, Roman Fountains reserves the right to change the specifications without notice.

TECHNICAL AND HYDRAULIC DATA									
DIMENSIONS					PERFORMANCE @ 45°				
MODEL NO.	DIM. 'A'	DIM. 'B'	DIM. 'C'	(F) N.P.T.	THROW	2'	3'	5'	7'
RFJ-100	4-1/2"	2 3/4"	1-13/16"	1"	GPM	9	12	14	19
					HEAD	3'	4'	6'	8'
					SPREAD	20"	30"	65"	94"
					HEIGHT	20"	24"	45"	52"

DRAWING NO.
1.710