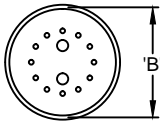
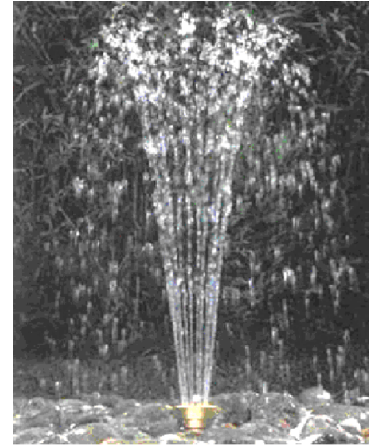


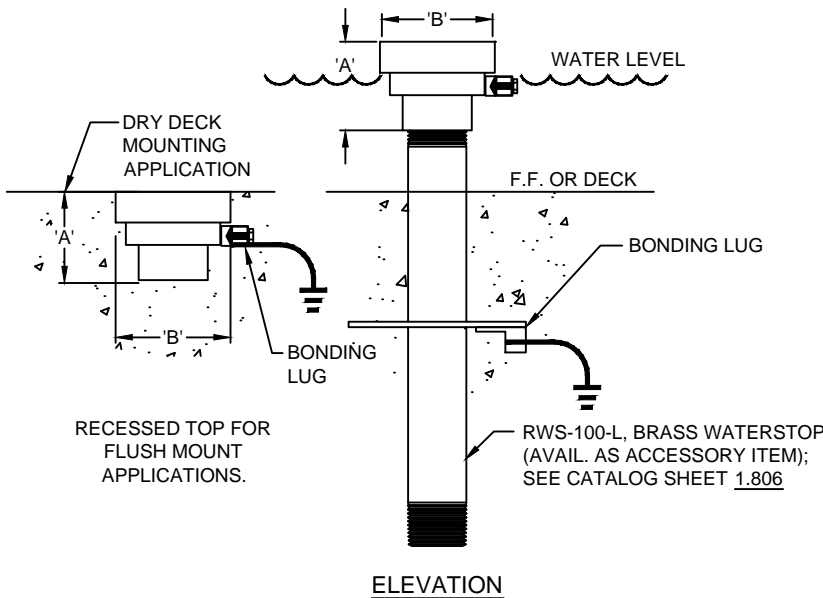
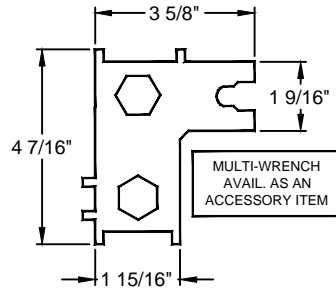
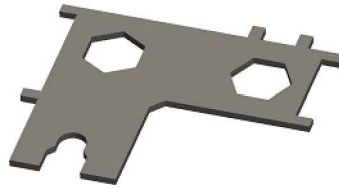


(877) 794-1802

RCJ-100, CROWN JET NOZZLE



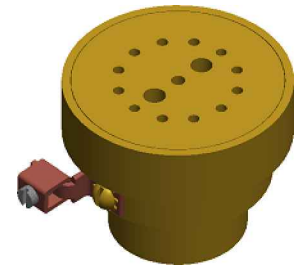
PLAN VIEW



ELEVATION

OPERATING DATA:

NOISE: _____ Low
 VISIBILITY: _____ Low to Medium
 SPLASH/MIST: _____ High
 WIND STABILITY: _____ Low
 AERATION QUALITY: _____ Low



3D IMAGE

SPECIFICATION DATA: Crown Jet Nozzle; machined brass and bronze construction, machined brass orifices, removable top for easy cleaning; female threaded connection. (Alignment swivel available as accessory; see catalog sheet 1.802).

DESIGN/APPLICATION DATA: RCJ-100 Crown Jet nozzle is designed for installation into play decks in public playgrounds to ensure 'trip' resistant installation, or may be riser mounted when used in traditional fountain pools.

- NOTES:**
1. Nozzles may be riser mounted or flush deck mounted
 2. Fine screening at pump, half the diameter of jet orifice or smaller to minimize nozzle clogging recommended.
 3. Due to continuing product improvement program, Roman Fountains reserves the right to change the specifications without notice

TECHNICAL AND HYDRAULIC DATA								
MODEL No.	A DIM.	B DIM.	INLET N.P.T. (female)	SPRAY HEIGHT	2'	3'	4'	6'
RCJ-100	2 1/16"	2 5/8"	1"	GPM HEAD	4 3'	5 5'	6 6'	7 10'

DRAWING NO.
1.417
 R0_08-14-18