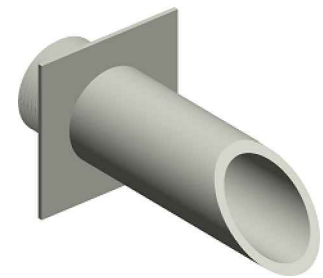
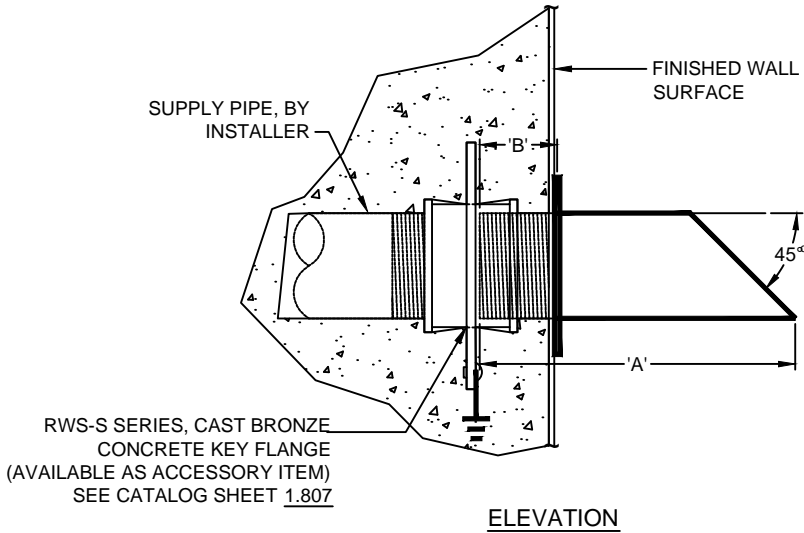
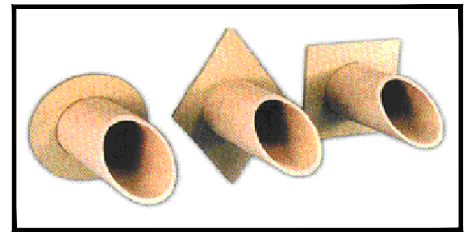


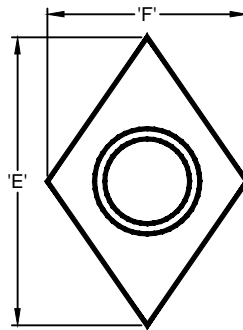
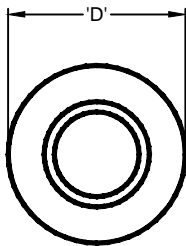


(877) 794-1802

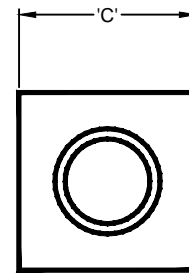
RDWS-SERIES, DECORATIVE BRASS WALL SCUPPER



3D IMAGE



FRONT VIEW



SPECIFICATION DATA: RDWS-Series, Decorative Brass Wall Scupper consisting of Schedule 40 red brass pipe, 45° bevel cut, continuous welded wall trim plate, male N.P.T. thread connection. Brush finish.

NOTE: Due to continuing product improvement program, Roman Fountains reserves the right to change the specifications without notice.

TECHNICAL AND HYDRAULIC DATA								
DIMENSIONS								RECOMMENDED MIN. FLOW RATE (GPM)
MODEL NO.	(F)N.P.T.	A	B	C	D	E	F	
RDWS-200	2"	7 1/8"	1 3/4"	4"	4"	6 1/2"	4 1/2"	5
RDWS-300	3"	11 1/2"	2"	6"	6"	9 3/4"	6 3/4"	10
RDWS-400	4"	15 1/4"	2 1/4"	8"	8"	13"	9"	15

DRAWING NO.
1.610