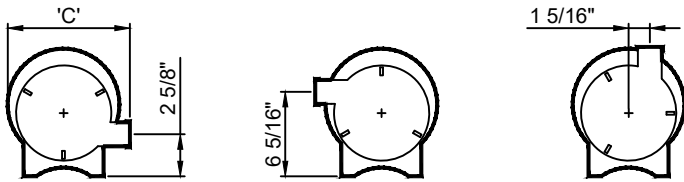




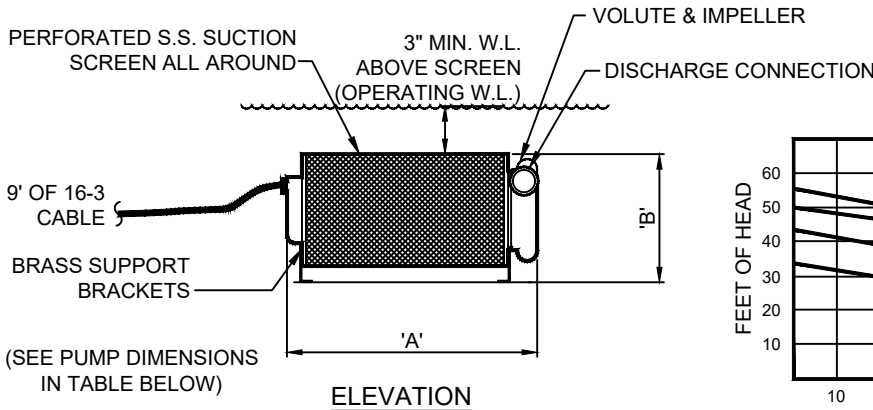
(877) 794-1802

RHSP SERIES, HEAVY DUTY SUBMERSIBLE PUMP



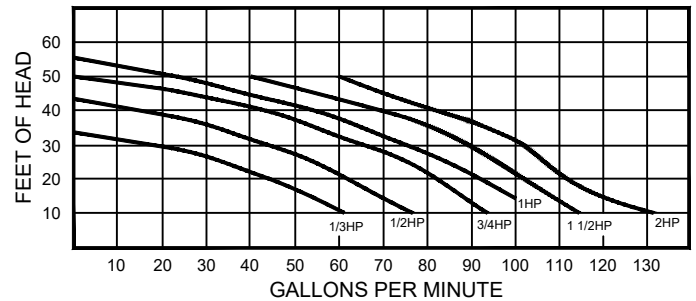
VOLUTE END VIEWS

VOLUTE END VIEW WITH POSSIBLE VOLUTE POSITIONS (FIELD ADJUSTABLE)



ELEVATION

HYDRAULIC DATA



| TECHNICAL & HYDRAULIC DATA | | | | | | | |
|----------------------------|-------|---|-------------------|-------------------|-----------------------|-----------------------|----------------------|
| Model No. | HP | Connection Size OD (Hose)/ID F (NPT) | Voltage/ Phase | Nameplate Amps | Overall Length 'A' | Overall Height 'B' | Overall Width 'C' |
| RHSP-033 | 1/3 | 1 3/4"/1" | 120/1 | 8.0 | 15 3/4" | 8 1/16" | 7 3/4" |
| RHSP-050 | 1/2 | 1 3/4"/1" | 120/1 | 9.5 | 15 3/4" | 8 1/16" | 7 3/4" |
| RHSP-075 | 3/4 | 1 3/4"/1" | 120/1 | 12.0 | 15 3/4" | 8 1/16" | 7 3/4" |
| ** RHSP-100 | 1 | 1 3/4"/1" | 230/1 | 7.0 | 15 3/4" | 8 1/16" | 7 3/4" |
| ** RHSP-150 | 1 1/2 | 2"/1 1/4" | 230/1 | 8.5 | 16 1/8" | 8 7/8" | 8 1/2" |
| ** RHSP-200 | 2 | 2"/1 1/4" | 230/1 | 11.0 | 16 1/8" | 8 7/8" | 8 1/2" |

** NOTE: DO NOT OPERATE 1, 1 1/2 OR 2 HP UNIT ON 208V. OR PREMATURE MOTOR FAILURE WILL OCCUR! AND WILL NOT BE COVERED UNDER WARRANTY.

SPECIFICATION DATA: Heavy Duty Bronze Submersible Pump; All bronze construction, 264 square inch wrap around stainless steel perforated suction screen (5/32"Ø openings), ceramic-carbon pump seal, permanent split capacitor motor, built-in automatic current and thermal overload protection, oil-filled motor chamber with diaphragm pressure equalizer, oil-filled shaft chamber, floor mounting brackets, 9' of 16-3 submersible cable.

NOTE: Pump volute assembly may be rotated and re-attached in any of 4 positions. Unit is UL Listed.

DESIGN/APPLICATION DATA: Roman Fountains RHSP Series heavy duty submersible pumps are designed for general pumping service for submersible, in-fountain locations. Their compact design conserves pool floor space while permitting maximum operating efficiency in a horizontal position.

NOTES: 1. Pump volute assembly may be rotated and re-attached in any of 4 positions. Unit is UL Listed.

2. For use in decorative fountains ONLY! NOT designed for use in swimming pools or in fountains that share water common to a swimming pool or spa.
3. A suitable Class 'A' type G.F.C.I. protected motor control circuit must be provided by installer, for human safety and operation, per Section 680 of the National Electrical Code.
4. Due to continuing product improvement program, Roman Fountains reserves the right to change the specifications without notice.

DRAWING NO.
3.201