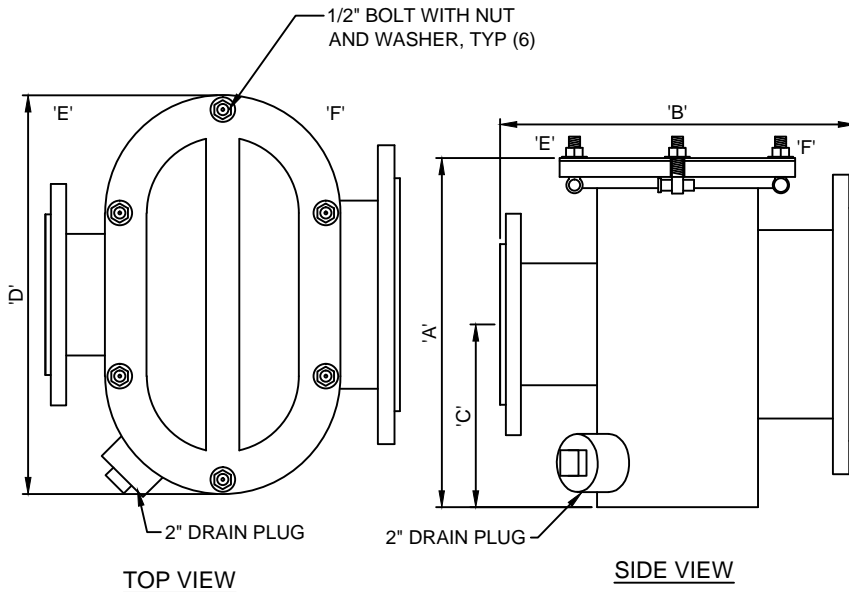




(877) 794-1802

RBS-SS SERIES, STAINLESS STEEL BASKET STRAINER



TECHNICAL DATA									
MODEL NO.	SCREEN AREA	BASKET PERFORATION	OPERATING PRESSURE	DIMENSIONS				FLANGE SIZE	
				'A'	'B'	'C'	'D'	'E'	'F'
RBS-8x5-SS	390 Sq. In.	.125	200 PSI	1'-3-3/4"	1'-4"	8-1/4"	1'-6"	5"	8"
RBS-8x6-SS	390 Sq. In.	.125	150 PSI	1'-3-3/4"	1'-4"	8-1/4"	1'-6"	6"	8"
RBS-8x8-SS	390 Sq. In.	.125	100 PSI	1'-3-3/4"	1'-4"	8-1/4"	1'-6"	8"	8"
RBS-10x8-SS	416 Sq. In.	.125	100 PSI	1'-4-3/4"	1'-4"	8-1/4"	1'-6"	8"	10"
RBS-10x10-SS	416 Sq. In.	.125	100 PSI	1'-4-3/4"	1'-4"	8-1/4"	1'-6"	10"	10"

NOTE: Units available with other size flange connections on special order.

SPECIFICATION DATA: Stainless Steel Basket Strainer; All stainless steel body, stainless steel removable strainer basket, clear polycarbonate cover, stainless steel cover clamps, gauge taps, neoprene cover gasket, side threaded drain outlet, flange connections.

DESIGN/APPLICATION DATA: Roman Fountains RBS-SS Series basket strainers are designed for use in fountain systems where straining of debris from the pool water is required before entering the display pump. The quick release lid design allows for ease of maintenance with minimum down time.

NOTES: 1. Provide proper clearance above strainer to remove strainer basket.

2. Due to continuing product improvement program, Roman Fountains reserves the right to change the specifications without notice.

INSTALLATION: All strainers are marked with the flow direction on the body and must be installed accordingly. Companion gaskets flanges and bolts are required (by others). Run correct type and size piping and install flanges as shown on installation drawings and schematics. Install basket strainer in the location and direction shown on installation drawings. Insure gaskets are properly centered and install and cross tighten all bolts to the specified torque. Piping on either side of strainer should be supported from pipe hangers and basket strainer should not be supported by piping only. Insure lid is properly seated and tightened prior to operation.

MAINTENANCE: Periodically check strainer basket for debris and remove and clean as necessary. Replace basket in strainer in original position and tighten cover. Periodically check gasket for cracks or excessive wear and replace as necessary. Pressure gauges installed before and after strainer will indicate pressure loss due to clogging and may be used as a guide in determining when cleaning is required. **DO NOT REMOVE LID WHILE PUMP IS IN OPERATION OR SERIOUS DAMAGE AND INJURY MAY RESULT.**

DRAWING NO.
3.601