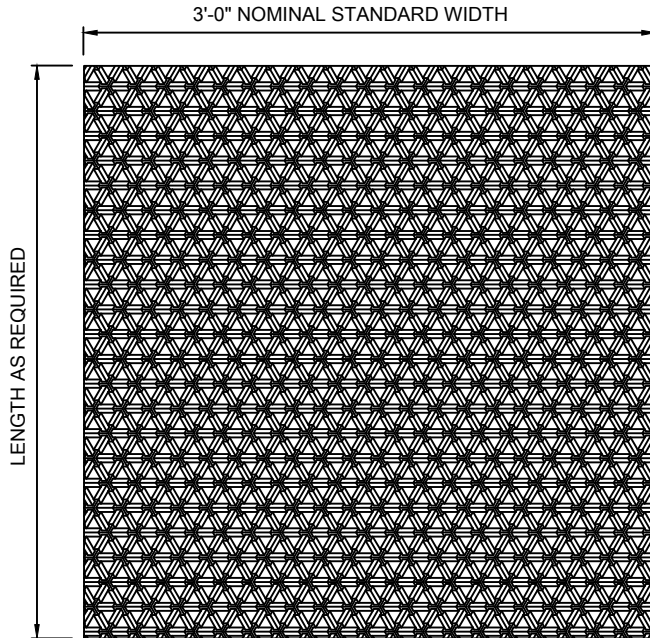
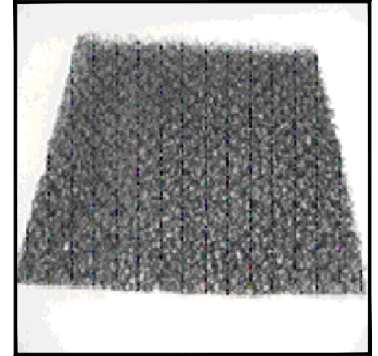




(877) 794-1802

RSPM-SERIES, SPLASHPAD MATTING



PLAN VIEW

COLOR : BLACK ONLY



INSTALLER NOTE:
THIS MATERIAL REQUIRES A FLAT
STRUCTURAL BASE TO LAY ON. (SEE
RFG SERIES, FIBERGRATE MATERIAL
ON CATALOG DATA SHEET 3.21)



ELEVATION

SPECIFICATION DATA: RSPM Series, Splashpad Matting, is a flexible three-dimensional 3/8" thick material, produced from polyamide 6 monofilaments heat-welded together where they cross to form a tough, open structured matting with more than 95% free space. The matt is 36" Wide (Nominal) x Length as required and may be 'stitched' together for wider coverage.

DESIGN/APPLICATION DATA: RSPM Series is a proven, lightweight, low profile splash reduction material. The three-dimensional matting absorbs water droplets causing them to become trapped in the mesh with minimal 'bounce back'.

NOTE: Due to continuing product improvement program, Roman Fountains reserves the right to change the specifications without notice.

DRAWING NO.
3.805