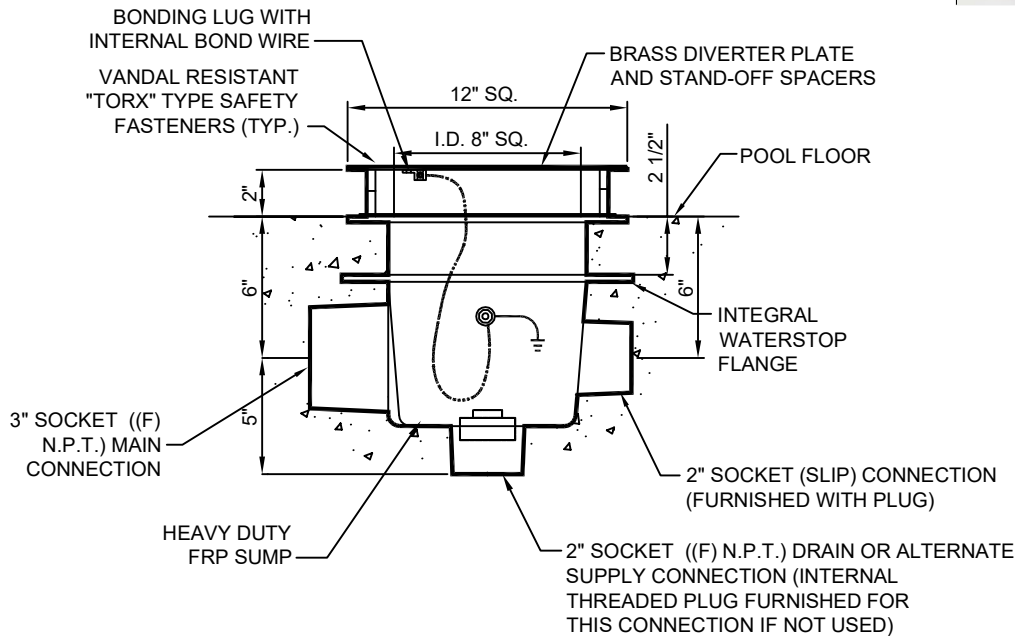




(877) 794-1802

RAVS-1200-DD, 12" SQUARE DIVERTER PLATE & SUMP ASSEMBLY



SPECIFICATION DATA: 12" Square Diverter Plate & Sump Assembly; Heavy Duty FRP sump with integral waterstop flange, 3" side, 2" side and bottom (socket) connections. (The 2" interior bottom connection shall be provided with a 2" threaded male plug.) Solid brass 3/16" thick diverter plate with brass spacers, "TORX" type S.S. vandal resistant safety fasteners and wrench.

DESIGN/APPLICATION DATA: Roman Fountains RAVS-1200-DD, diverter plates and sumps are designed for use in fountain and reflecting pools using remote pumping systems. They are designed for use as discharge diffusion devices to return water to the pool without turbulence.

NOTES:

1. 96 SQ. inch open area = .510 FPS @ 120 GPM velocity.
2. Recommended maximum flow rate: 120 GPM @ 16" water depth.
3. Due to continuing product improvement program, Roman Fountains reserves the right to change the specifications without notice.