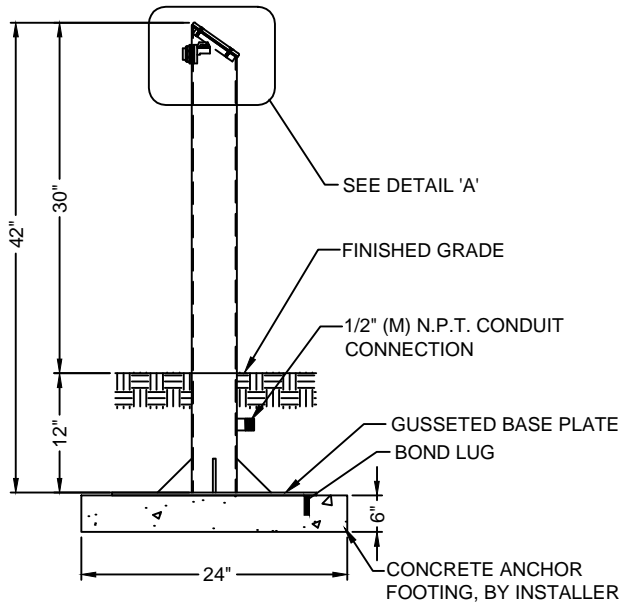


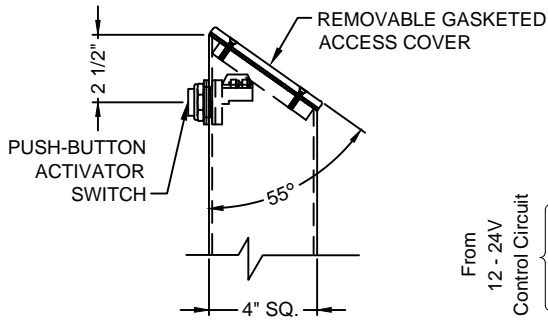


(877) 794-1802

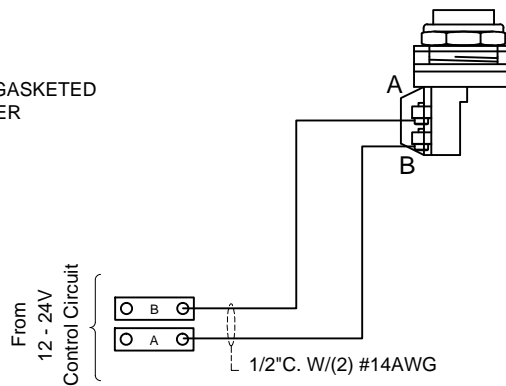
# RNBA-100, BOLLARD MOUNT PUSH-BUTTON ACTIVATOR



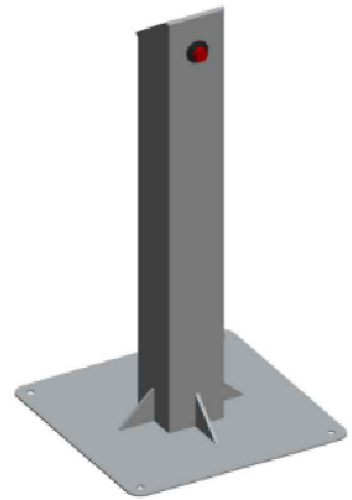
ELEVATION



DETAIL 'A'



WIRING DIAGRAM



3D IMAGE

**SPECIFICATION DATA:** Bollard Mount Activator: 42" tall stainless steel, 4" square tubing, with gusseted anchor base plate, 1/2" conduit connection, removable access cover with vandal resistant fasteners and gasket, weatherproof push-button start/run switch, and bonding/grounding lug.

- NOTES:**
1. When adding the two #14AWG switch wires, allow at least two feet of extra wire inside the niche housing to ease the installation and removal of the push-button switch.
  2. After the wiring connection has been made, seal the conduit entry with duct seal or rubber silicon.
  3. Due to continuing product improvement program, Roman Fountains reserves the right to change the specifications without notice.

DRAWING NO.  
**1.501**