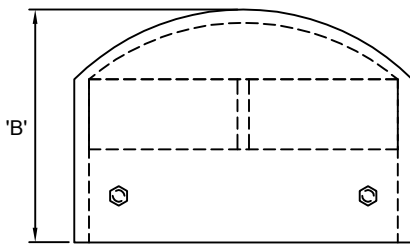
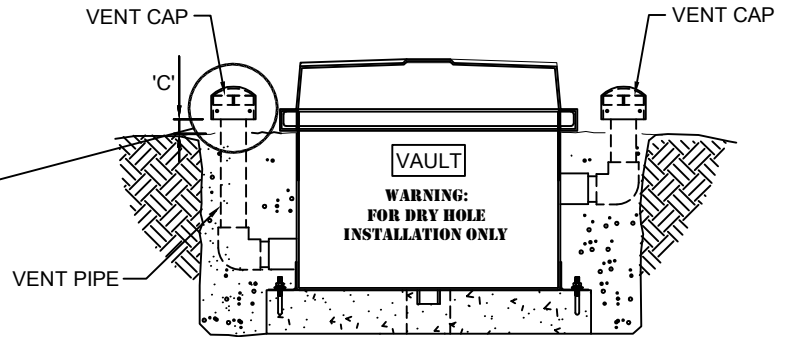


PLAN VIEW



ELEVATION VIEW



TYPICALLY ATTACHED TO THE ENDS OF THE TWO VAULT VENTILATION PIPES AS SHOWN IN THIS ELEVATION VIEW

DIMENSIONAL INFORMATION					
MODEL	VENT PIPE SIZE	OVERALL DIAMETER 'A'	CAP HEIGHT 'B'	MIN. CLEARANCE ABOVE GRADE 'C'	APPLICATION
RPVC-300	3"	7-1/4"	5"	3"	RDP-1 & STORAGE TANKS
RPVC-400	4"	7-1/4"	5"	3"	RDP-2
RPVC-600	6"	9-5/16"	6-3/8"	3"	RDP-250 & RDP-300
RPVC-800	8"	11-13/16"	5-1/4"	3"	RDP-4 & RDP-5

SPECIFICATION DATA : PVC Vent Cap, constructed of Schedule 40 PVC, and 1/4" stainless steel fasteners. Corrosion resistant design, brown.

DESIGN/APPLICATION DATA: The RPVC-Series vent cap is used for terminating ventilation piping above ground level. Low profile design allows air movement and reduces the possibility of debris being placed in the vent openings, thus causing stoppage of the ventilation system.

NOTE: Due to our continuing product improvement program, Roman Fountains reserved the right to change the specifications without notice.