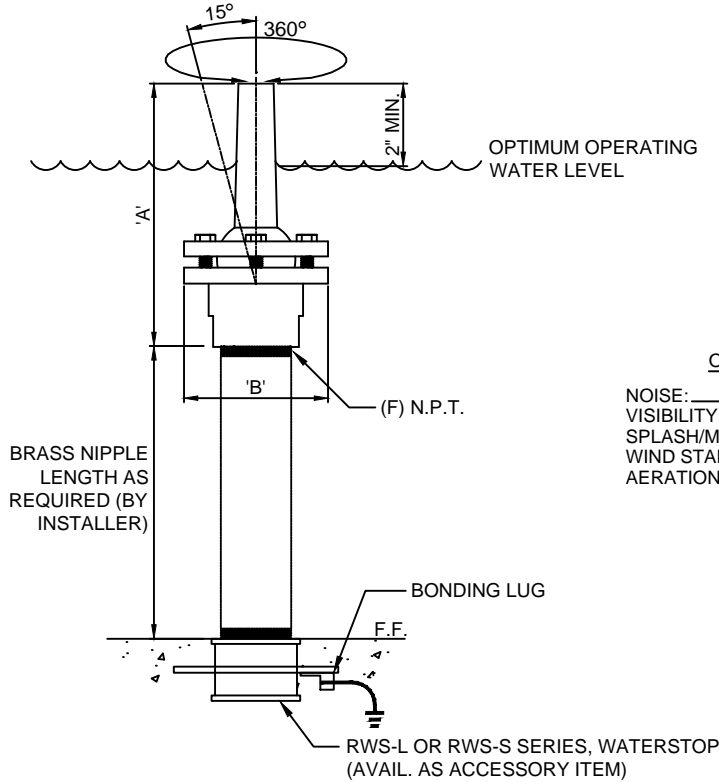




(877) 794-1802

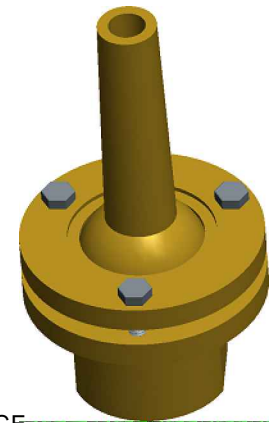
RSN-A SERIES, ADJUSTABLE SMOOTH BORE NOZZLE



ELEVATION

OPERATING DATA:

NOISE: _____ Low to Medium
 VISIBILITY: _____ Medium
 SPLASH/MIST: _____ Medium
 WIND STABILITY: _____ Low to Medium
 AERATION QUALITY: _____ Low



3D IMAGE

SPECIFICATION DATA: Adjustable Smooth Bore Nozzle; machined cast bronze and brass construction, swivel feature to allow a 15° adjustment from vertical in a 360° cone, (F) N.P.T. connection.

DESIGN/APPLICATION DATA: RSN-A Series smooth bore nozzles produce a clear stream of water with minimal distortion when operated within flow rates in table above. "A" Series smooth bore nozzles come with an angle adjustment feature to allow for a variety of spray angles.

- NOTES:**
1. Screening at half the orifice diameter is recommended to minimize clogging.
 2. Boxed area in table indicates optimum performance.
 3. Due to continuing product improvement program, Roman Fountains reserves the right to change the specifications without notice.

TECHNICAL AND HYDRAULIC DATA																			
MODEL NO.	SUCTION SCREENING REQUIRED	DIMENSIONS				SPRAY HEIGHT													
		(F) N.P.T.	ORIFICE SIZE	'A'	'B'		5'	10'	15'	20'	30'	40'	50'	60'	70'	80'	90'	100'	
RSN-100-A	.187	1"	3/8"	5"	2 5/8"	GPM	7	9	12	14									
						HEAD	8'	14'	21'	44'									
RSN-125-A	.250	1 1/4"	1/2"	5 3/4"	3 1/4"	GPM	11	16	20	25									
						HEAD	7'	13'	19'	33'									
RSN-150-A	.312	1 1/2"	5/8"	7 1/4"	3 1/2"	GPM	19	25	31	37	45	59							
						HEAD	10'	15'	25'	30'	41'	48'							
RSN-200-A	.437	2"	7/8"	7 1/2"	4 3/8"	GPM	45	56	67	86	113	117							
						HEAD	12'	19'	26'	44'	69'	74'							
RSN-300-A	.562	3"	1 1/8"	12 1/4"	6"	GPM	79	94	116	137	174	197	230						
						HEAD	12'	19'	27'	41'	58'	79'	115'						
RSN-400-A	.750	4"	1 1/2"	16"	8 3/4"	GPM				198	259	284	320	393	407	423	496	520	
						HEAD				24'	37'	51'	61'	84'	97'	104'	110'	150'	

DRAWING NO.
1.207