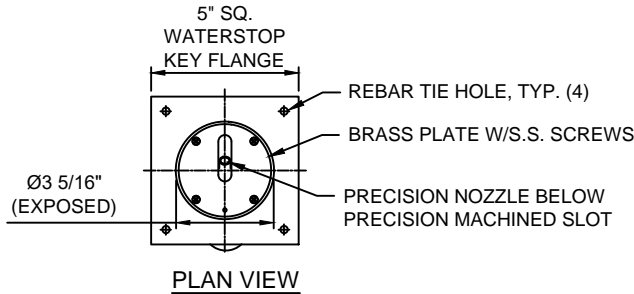
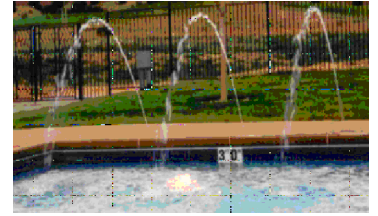


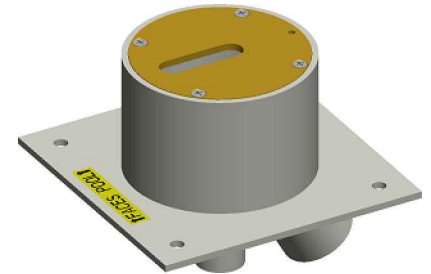
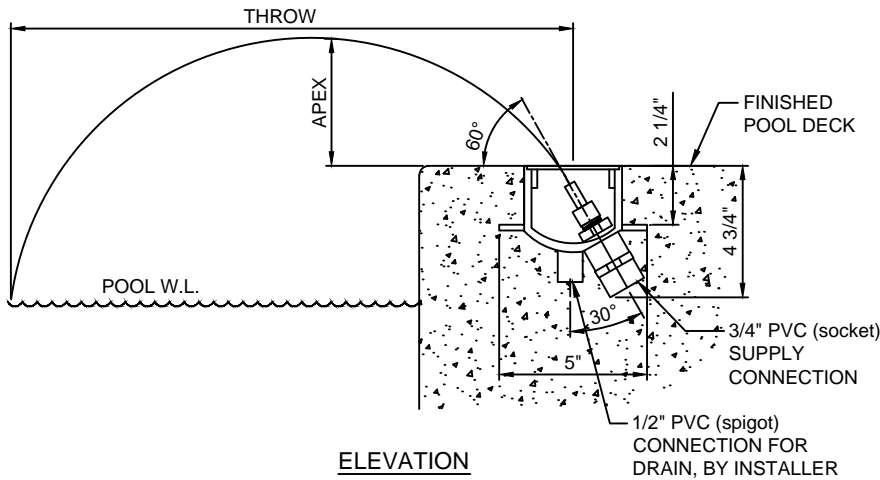


(877) 794-1802

RPWJ-PDJ SERIES, PRECISION 'DECK JET'



OPERATING DATA:
 NOISE: _____ Low to Medium
 VISIBILITY: _____ Low
 SPLASH/MIST: _____ Medium
 WIND STABILITY: _____ Low
 AERATION QUALITY: _____ Low



3D IMAGE

SPECIFICATION DATA: Precision 'Deck Jet' assembly consisting of high strength Sch. 40 thermoplastic niche body with waterstop/key flange, rebar attachment holes, brass adjustable precision jet, flush brass cover plate with stainless steel cover fasteners, 3/4" PVC (socket) supply connection and a 1/2" PVC (spigot) drain connection.

DESIGN/APPLICATION DATA: RPWJ-PDJ Series precision clear stream deck jets are designed for use with pools where a flush-mounted deck nozzle is required. The modular design facilitates ease of installation while providing a clean, unobtrusive, vandal resistant finish.

- NOTES:**
- Nozzle orifices are interchangeable in the field.
 - Use only purple primer and heavy body gray PVC glue to install.
 - Fine screening at pump, half the diameter of jet orifice or smaller, to minimize nozzle clogging recommended.
 - This is **NOT** a laminar stream effect. Nozzle stream breaks up approx. 2'-3' from face plate.
 - Due to continuing product improvement program, Roman Fountains reserves the right to change the specifications without notice.

TECHNICAL AND HYDRAULIC DATA											
MODEL NO.	PVC SOCKET CONNECTION	NOZZLE ORIFICE DIA.	*THROW ANGLE		THROW @ 45° ANGLE DISTANCE MAX APEX, 45°	THROW @ 45° ANGLE					
						6'	8'	10'	12'	14'	16'
			MIN.	MAX.		1.5'	2'	2.5'	3'	3.5'	4'
RPWJ-PDJ-187	3/4"	3/16"	45°	75°	GPM	1.3	1.5	1.8	2.1	2.2	2.3
RPWJ-PDJ-250	3/4"	1/4"	45°	75°	GPM	2.0	2.5	2.8	3.1	3.4	3.6
RPWJ-PDJ-312	3/4"	5/16"	45°	75°	GPM	2.6	3.0	3.6	4.2	5.1	6.0

DRAWING NO.
1.411
R0_08-14-18