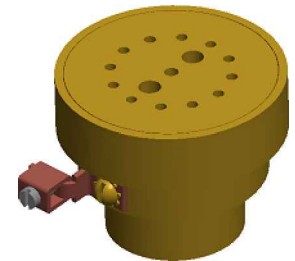
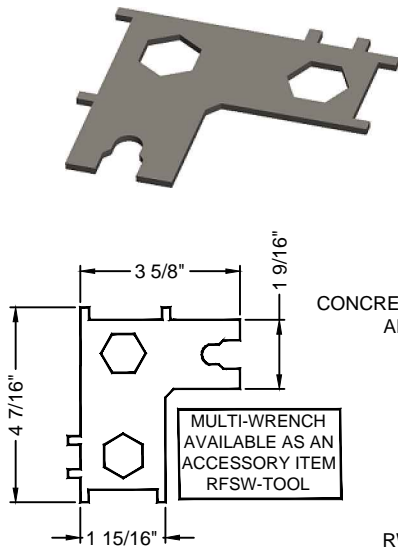
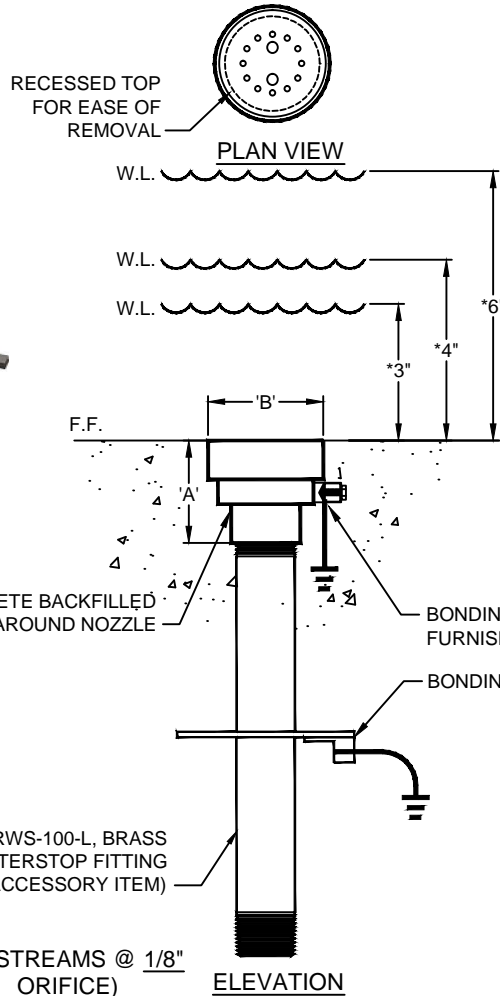




OPERATING DATA:

NOISE: _____ Low to Medium
 VISIBILITY: _____ Medium
 SPLASH/MIST: _____ Medium
 WIND STABILITY: _____ Low
 AERATION: _____ High
 QUALITY: _____



3D IMAGE

(12 STREAMS @ 1/8" ORIFICE)

SPECIFICATION DATA: Flush "Sunshelf" Nozzle, machined brass and bronze construction, machined brass jet orifices, recessed removable cap for easy cleaning, bonding lug, and 1" (F) N.P.T. threaded connection

DESIGN/APPLICATION DATA: When submerged, the RPSS-100 nozzle will produce a vertical mound of water via concentric ring of precision orifices to push through the shallow water.

- NOTES:**
1. Sunshelf nozzle may generate wave turbulence in small, confined pools, requiring a dampening device (available as accessory item); see catalog data sheet 1.810/1.811.
 2. Screening at pump (.062") to minimize clogging potential is recommended.
 3. Greater submergence creates broader/fuller display, but requires greater GPM and pressure.
 4. Due to continuing product improvement program, Roman Fountains reserves the right to change the specifications without notice.

TECHNICAL AND HYDRAULIC DATA									
DIMENSIONS				SPRAY HEIGHT/PERFORMANCE					
MODEL NO.	DIM. 'A'	DIM. 'B'	(F) N.P.T.	*SUBM. (INCHES)	APPROX. SPRAY HEIGHT	8"	12"	18"	24"
RPSS-100 (Submerged)	2-5/16"	2-5/8"	1"	6"	GPM	22	25	34	44
					HEAD (ft.)	14'	20'	30'	38'
				4"	GPM	18	21	29	36
					HEAD (ft.)	8'	12'	19'	26'
				3"	GPM	16	19	23	29
					HEAD (ft.)	7'	11'	16'	23'

DRAWING NO.
1.416