

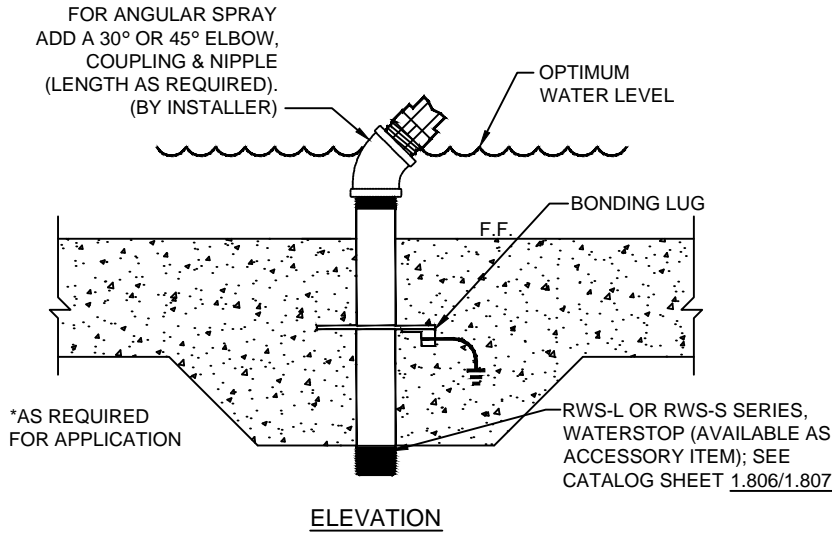


(877) 794-1802

# RVJ-SERIES, VEE JET NOZZLE

### OPERATING DATA:

NOISE: \_\_\_\_\_ Low  
 VISIBILITY: \_\_\_\_\_ Low  
 SPLASH/MIST: \_\_\_\_\_ Medium  
 WIND STABILITY: \_\_\_\_\_ Low  
 AERATION QUALITY: \_\_\_\_\_ Low



**3D IMAGE**

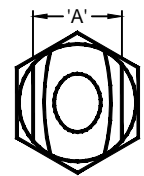
**SPECIFICATION DATA:** One-piece machined brass construction, natural finish, (M) N.P.T. connection (Swivel available as an accessory item); see catalog sheet 1.802

**DESIGN/APPLICATION DATA:** RVJ Series nozzle produces a fan-shaped spray of water.

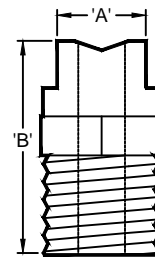
**NOTES:** 1. Fine screening at pump, half the diameter of jet orifice or smaller opening to minimize nozzle clogging is recommended.

2. Due to our continuing product improvement program, Roman Fountains reserves the right to change the specifications without notice.

TECHNICAL AND HYDRAULIC DATA											
MODEL	INLET (N.P.T.)	'A' DIM.	'B' DIM.	THROW @ 45°±	SPRAY THROW/PERFORMANCE						
					2'	3'	4'	5'	6'	8'	10'
RVJ-050	1/2"	5/8"	1 1/2"	GPM	1.0	1.3	1.5	1.7	2.0	-	-
				HEAD	2'	3'	4'	6'	7'	-	-
				SPREAD	2"	8"	18"	24"	36"	-	-
				APEX	6"	9"	12"	15"	18"	-	-
RVJ-075	3/4"	7/8"	2"	GPM	2.0	3.0	4.0	5.0	7.0	8.0	-
				HEAD	2'	3'	4'	6'	7'	8'	-
				SPREAD	5"	10"	18"	30"	38"	56"	-
				APEX	6"	9"	12"	15"	18"	24"	-
RVJ-100	1"	1 1/8"	2 5/16"	GPM	3.5	5.5	7.0	9.0	12.5	14.5	17
				HEAD	2'	3'	4'	6'	7'	8'	10'
				SPREAD	8"	18"	28"	36"	52"	72"	96"
				APEX	6"	9"	12"	15"	18"	24"	30"
RVJ-125	1 1/4"	1 3/8"	3 3/4"	GPM	4.5	7.0	9.0	12	16	20	24
				HEAD	2'	3'	4'	6'	7'	8'	10'
				SPREAD	11"	18"	30"	40"	56"	84"	96"
				APEX	6"	9"	12"	15"	18"	24"	30"
RVJ-200	2"	2"	5 3/8"	GPM	15	24	30	35	38	47	55
				HEAD	2'	3'	4'	6'	7'	8'	10'
				SPREAD	18"	24"	34"	48"	68"	96"	120"
				APEX	6"	9"	12"	15"	18"	24"	30"



**PLAN VIEW**



**ELEVATION**

DRAWING NO.  
**1.704**