

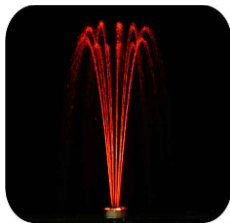
## RDHN-SERIES, S.S. NOZZLE ASSY. FOR RFL-DH LED LIGHTS



RDHN-APJ PATTERN



RDHN-JC PATTERN



RDHN-CJ PATTERN



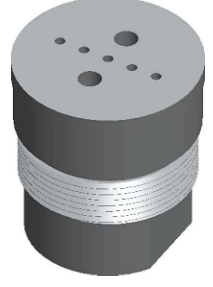
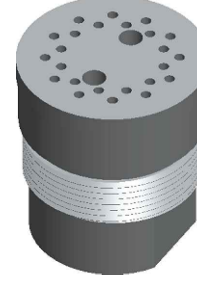
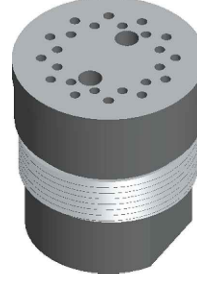
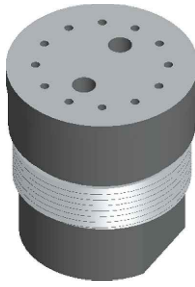
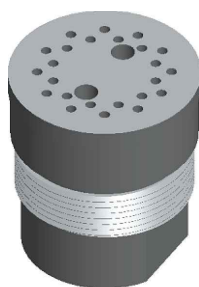
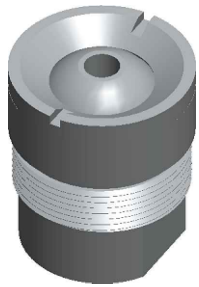
RDHN-TT PATTERN



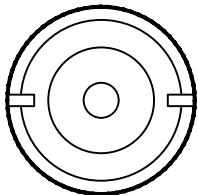
RDHN-SJ PATTERN



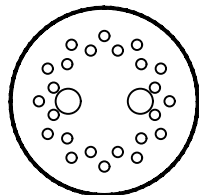
RDHN-FJ PATTERN



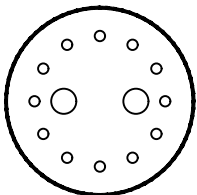
3D IMAGES



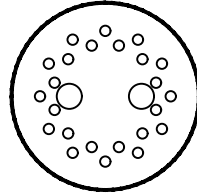
RDHN-APJ 3/8"  
ADJUSTABLE  
PRECISION JET



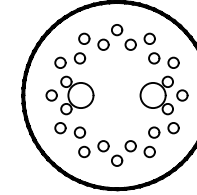
RDHN-JC  
JET CLUSTER



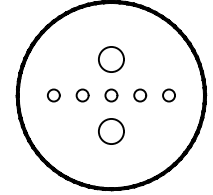
RDHN-CJ  
360° CROWN JET



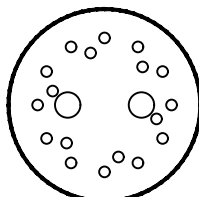
RDHN-TT,  
360° TWO TIER 5-7



RDHN-SJ,  
SPRITZER JET



RDHN-FJ,  
LINEAR FAN JET



RDHN-LFJC  
LOW-FLOW JET CLUSTER

PLAN VIEWS

MODEL NO.		TECHNICAL DATA						
		SPRAY HEIGHT						
		2'-0"	3'-0"	4'-0"	5'-0"	6'-0"	7'-0"	8'-0"
RDHN-APJ	GPM	4.0	5.0	6.0	6.6	7.0	7.6	8.0
	HEAD	4.0'	5.0'	6.0'	7.0'	8.0'	10.0'	12.0'
RDHN-CJ, -LFJC	GPM	4.5	5.0	6.0	6.5	7.0	8.0	8.5
	HEAD	5.0'	6.0'	7.0'	8.5'	10.0'	12.0'	14.0'
RDHN-JC, -TT,-SJ	GPM	9.0	10.5	12.0	13.5	14.5	16.0	17.0
	HEAD	11.0'	12.0'	13.0'	14.5'	16.0'	18.0'	20.0'
RDHN-FJ	GPM	2.5	3.0	3.5	4.0	5.0	5.5	6.0
	HEAD	4.62'	5.8'	6.9'	8.2'	9.5'	10.39'	11.55'

**SPECIFICATION DATA:** Stainless Steel Nozzle Assembly with interchangeable cover. Manufactured from Type 303 Stainless Steel w/1" (F) N.P.T. bottom connection.

Due to continuing product improvement program, Roman Fountains reserves the right to change the specifications without notice.

