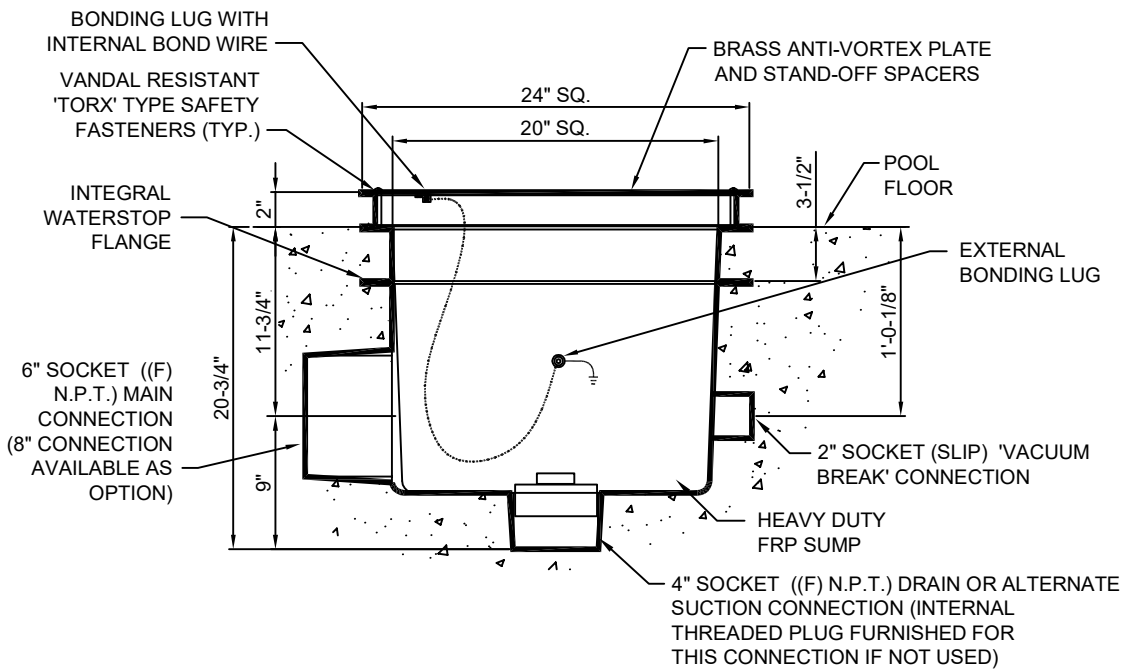




(877) 794-1802

# RAVS-2400-DD, 24" SQUARE DIVERTER PLATE & SUMP ASSEMBLY



**SPECIFICATION DATA:** 24" Square Diverter Plate & Sump Assembly; Heavy Duty FRP sump with integral waterstop flange and 6" (socket) side (8" connection available as option), 4" bottom and 2" 'vacuum break' (socket) connections. (the 4" internal connection shall be provided with a 4" threaded male plug). Solid brass 3/16" thick diverter plate with brass spacer, "TORX" type S.S. vandal resistant safety fasteners, and wrench

**DESIGN/APPLICATION DATA:** Roman Fountains RAVS-2400-DD, diverter plates and sumps are designed for use in fountains and reflecting pools using remote pumping systems. They are designed for use as discharge diffusion devices to return water to the pool without turbulence.

**NOTES:**

1. 192 SQ. inch open area = .851 FPS @ 400 GPM velocity.
2. Recommended maximum flow rate: 400 GPM @ 16" water depth.
3. Due to continuing product improvement program, Roman Fountains reserves the right to change the specifications without notice.