

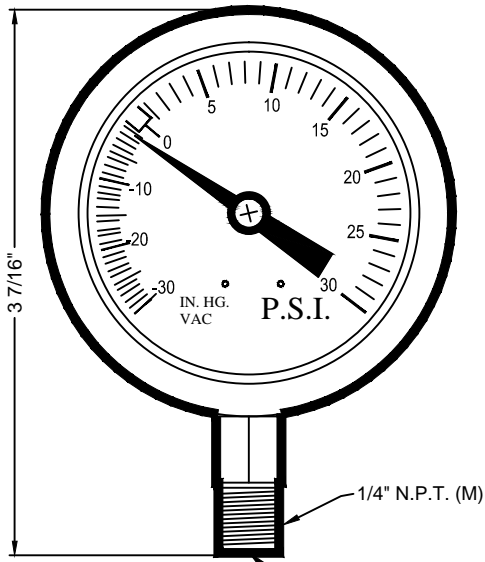


(877) 794-1802

RPVG SERIES, LIQUID FILLED
PRESSURE/VACUUM GAUGE

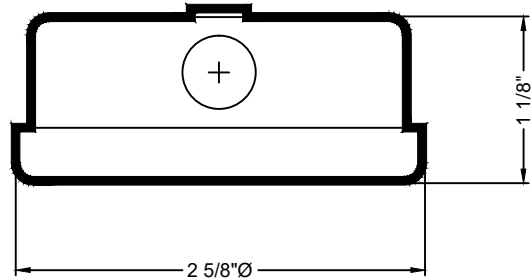


LIQUID FILLED



ELEVATION

GAUGE 'SNUBBER' & PET-COCK VALVE RECOMMENDED WHEN INSTALLING GAUGES. (BY OTHERS)



TOP VIEW

- 0-30 IN. HG. VACUUM RANGE
- 0-30 PSI PRESSURE RANGE

MUST BE INSTALLED VERTICALLY

SPECIFICATION DATA: Liquid Filled Pressure/Vacuum Gauge; 2-1/2" standard liquid filled pressure/vacuum gauge featuring 30 PSI pressure range and 0-30 IN. HG. vacuum range, with durable stainless steel case, acrylic window, bronze bourdon tube, 1/4" N.P.T. brass connection, 3-2-3% accuracy, glycerin filled case, patented spring suspended movement.

NOTE: Due to continuing product improvement program, Roman Fountains reserves the right to change the specifications without notice.

DRAWING NO.
3.802