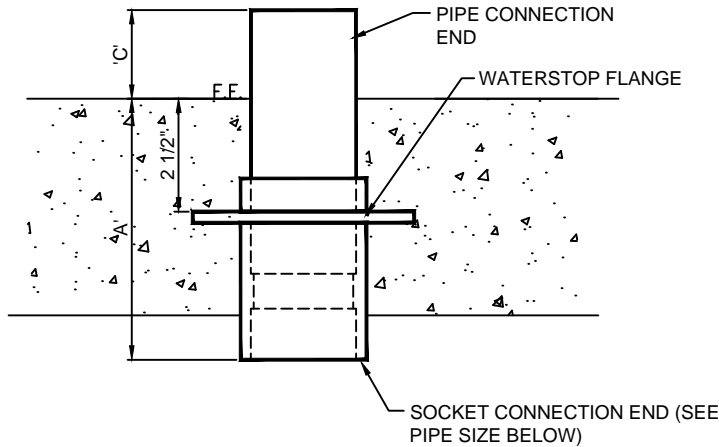


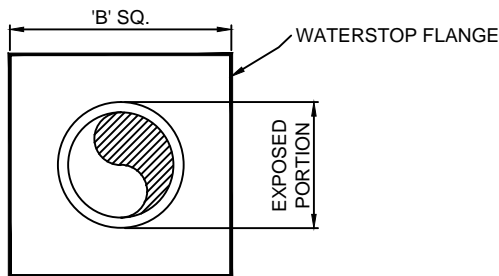


(877) 794-1802

RWS-P SERIES, PVC WATERSTOP FITTING



ELEVATION



TOP VIEW

*NOTE: EXTENDED PIPE LENGTHS AVAILABLE ON SPECIAL ORDER.



TECHNICAL DATA				
MODEL No.	PIPE SIZE	DIMENSION 'A'	DIMENSION 'B'	DIMENSION 'C'
RWS-150-P	1-1/2"	5-5/8"	4"	1-1/2"
RWS-200-P	2"	5-7/8"	5"	2"
RWS-250-P	2-1/2"	6-5/16"	6"	2-1/2"
RWS-300-P	3"	6-3/4"	8"	3"
RWS-400-P	4"	7-5/16"	9"	4"
RWS-600-P	6"	8-7/8"	12"	6"
RWS-800-P	8"	1'-3"	14"	8"
RWS-1000-P	10"	1'-9"	16"	10"
RWS-1200-P	12"	2'-0"	18"	12"

SPECIFICATION DATA: PVC Waterstop Fitting; shall be fabricated from Schedule 80 PVC pipe and PVC sheet material. Waterstop flange shall be solvent welded between pipe and fitting components for added strength. Bottom connections PVC socket.

NOTE: Due to our continuing product improvement, Roman Fountains reserves the right to change the specifications without notice.

DESIGN/APPLICATION DATA: RWS-P Series, slab penetration fittings are designed and fabricated for casting into concrete pool slabs.

NOTES:

1. Larger sizes available on request; consult factory.
2. Waterstop flange will be attached based on midpoint of structural slab thickness; consult factory.
3. Use only purple PVC primer and heavy body gray PVC glue to make connections.