

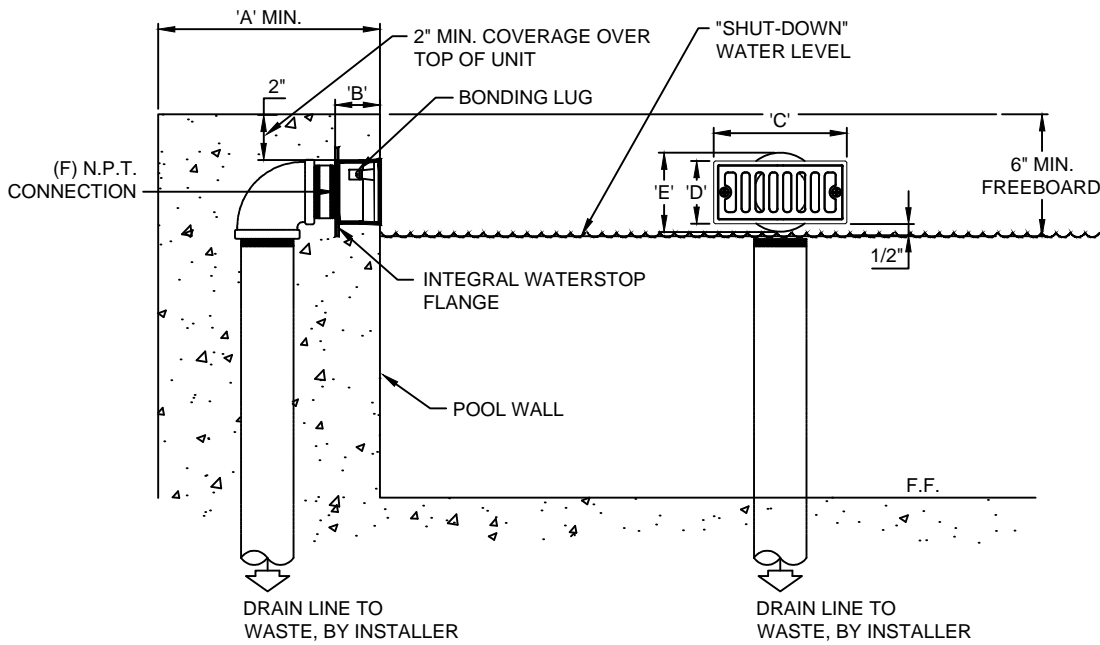


(877) 794-1802

# ROVS-200-W, SIDEWALL OVERFLOW DRAIN



FRONT ELEVATION



SIDE ELEVATION

FRONT ELEVATION

TECHNICAL DATA								
Model No.	Connection Size	Dimension 'A'	Dimension 'B'	Dimension 'C'	Dimension 'D'	Dimension 'E'	Open Area	Max. Drain Rate
ROVS-200-W	2"	10"	1-1/2"	6"	2-7/8"	3.5" dia..	6.5 Sq. In.	20 GPM

**SPECIFICATION DATA:** Sidewall Overflow Drain; bronze drain body, integral waterstop flange with bonding screw; removable bronze grate; stainless steel fasteners and (F) N.P.T. connection.

**DESIGN/APPLICATION DATA:** ROVS-W Series, sidewall overflow drains are designed for use in fountain and reflection pool walls to maintain a specified water level and siphon off excess water. They may be used in conjunction with RFD Series floor drains.

- NOTES:**
1. Installer must consult local codes for termination of drain lines.
  2. In multi-level fountains, the lowest pool may experience a rise in water level on system shut-down. Install overflow unit at 'static' (shut-down) water level.
  3. Due to continuing product improvement program, Roman Fountains reserves the right to change the specifications without notice.

DRAWING NO.  
**4.103**