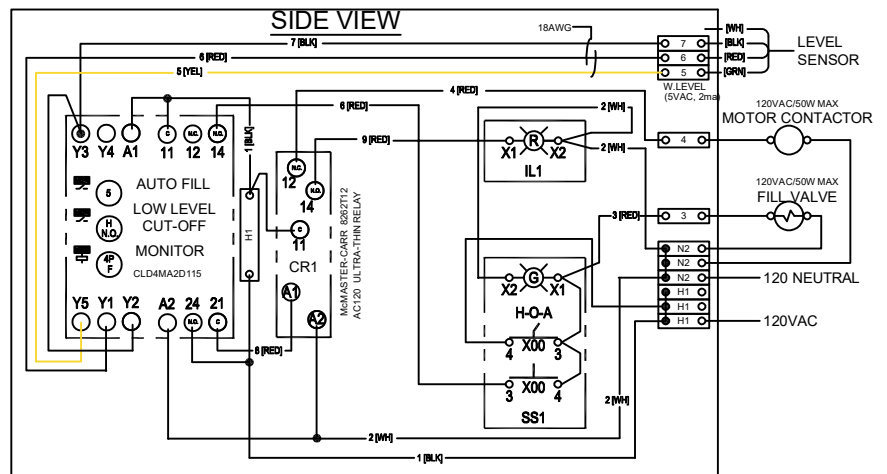
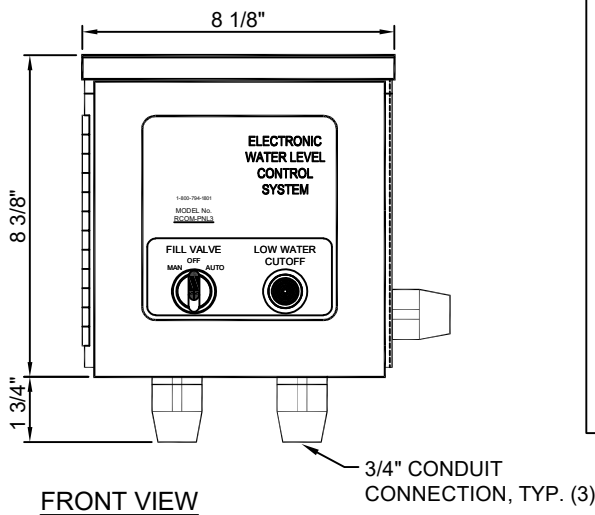
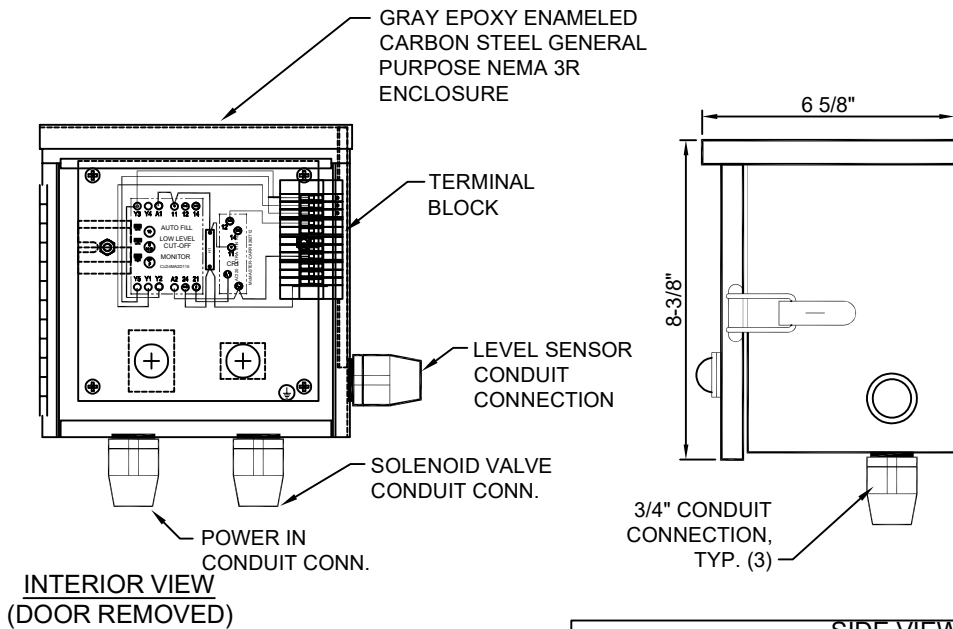




(877) 794-1802

# RCOM-PNL3, WATER LEVEL & LOW-LEVEL PROTECTION CONTROL



**SPECIFICATION DATA:** CONTACTS: SPDT @ 10A  
 TIME DELAYS: 2 SECONDS RISING LEVEL; 4 SECONDS FALLING LEVEL  
 SUPPLY: 120VAC, 50/60 HZ. @ 4.4VA  
 PROBE: 24VAC  
 OPERATING TEMPERATURE: -40 TO 150° F  
 TERMINALS: 22-12AWG, SCREW CLAMP TYPE

**DESIGN/APPLICATION DATA:** Water Level and Low Level Protection Controller, mounted in a NEMA 3R enclosure and is equipped with terminal blocks and a 3-position H.O.A. Fill Valve switch. The sensor inputs are FILL and LOW WATER CUT-OFF and can be used with a standard float switch or resistive probes. The Fill Valve and LWCO outputs provide a switched 120VAC @ 200W (max.) each. The system is powered with 120VAC, single phase. Unit is U.L. 508 listed.

**NOTES:** 1. For 'component' water level make-up/low water cutoff monitoring systems, see catalog cut sheets 4.201, 4.202, 4.204, 4.206, 4.207, 4.208 for compatible water level sensor housings.

2. Due to continuing product improvement program, Roman Fountains reserves the right to change the specifications without notice.

**DRAWING NO.**  
**4.210**