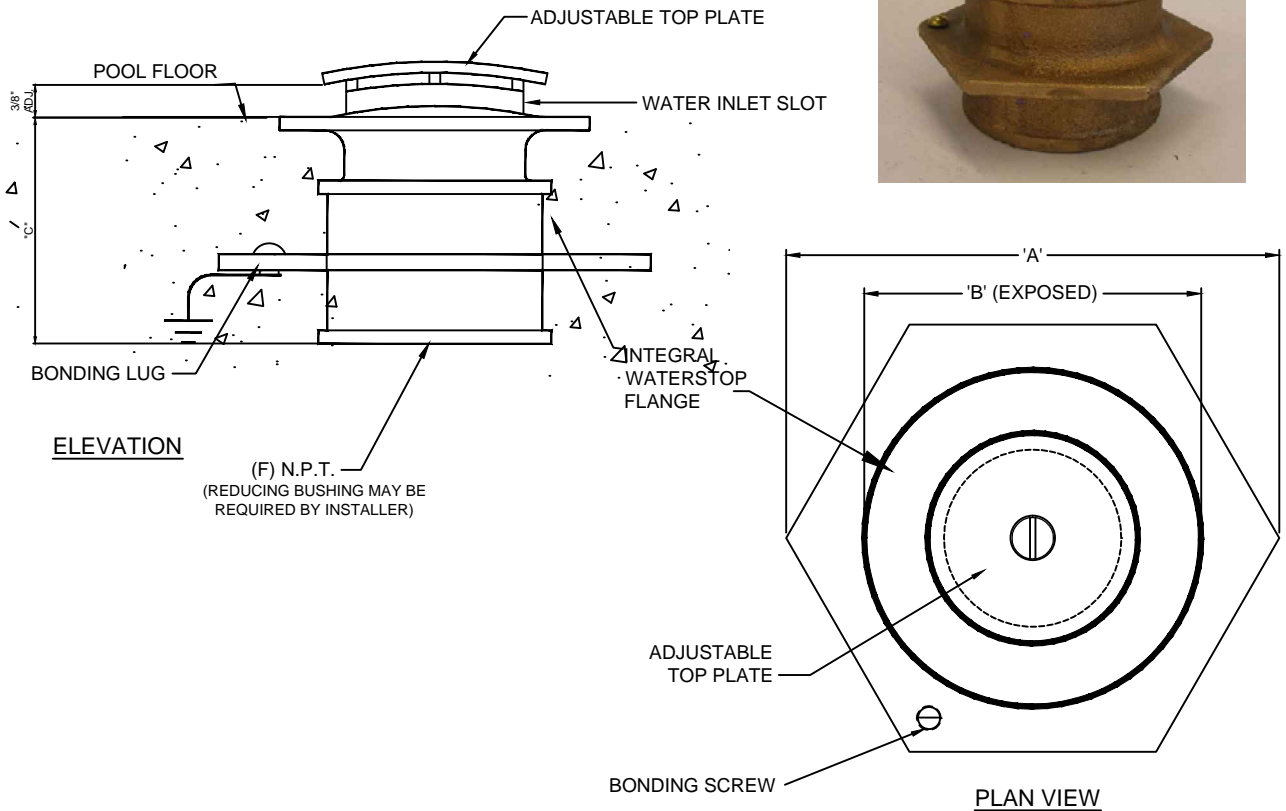


RIF-A SERIES, ADJUSTABLE FLOOR INLET FITTING



TECHNICAL DATA					
MODEL	CONNECTION SIZE	'A' DIMENSION	'B' DIMENSION	'C' DIMENSION	MAXIMUM FLOW RATE
RIF-150-A	1-1/2" (F)	4 7/8"	Ø3 1/2"	2 9/16"	25 GPM
RIF-200-A	2" (F)	5 9/16"	Ø3 13/16"	2 3/4"	35 GPM

SPECIFICATION DATA: Adjustable Inlet Fitting, machined cast bronze body and adjustable top deflector plate with deflector slots, retaining screw, integral waterstop flange with bonding screw and (F) N.P.T. connection.

DESIGN/APPLICATION DATA: Roman Fountains RIF-A Series, inlet fitting is designed for use in fountains and reflecting pools in conjunction with RCOM Series electronic water systems. Installed in the floor at the discharge point of the water makeup line, its flush mounted design with adjustable top plate creates a "finished" discharge point for incoming water.

- NOTES:**
1. RIF Series, inlet fittings may be used as water inlets/diverters for water trough applications, and as filtered water floor return inlet.
 2. Due to continuing product improvement program, Roman Fountains reserves the right to change the specifications without notice.

DRAWING NO.
4.406