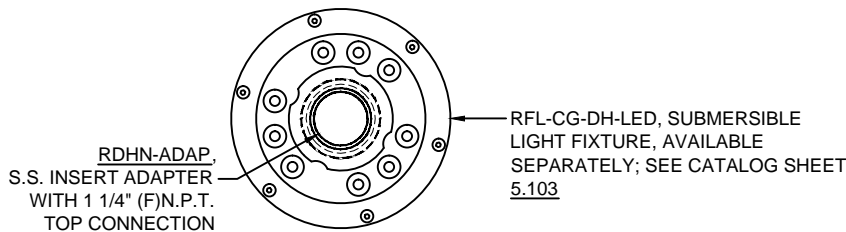


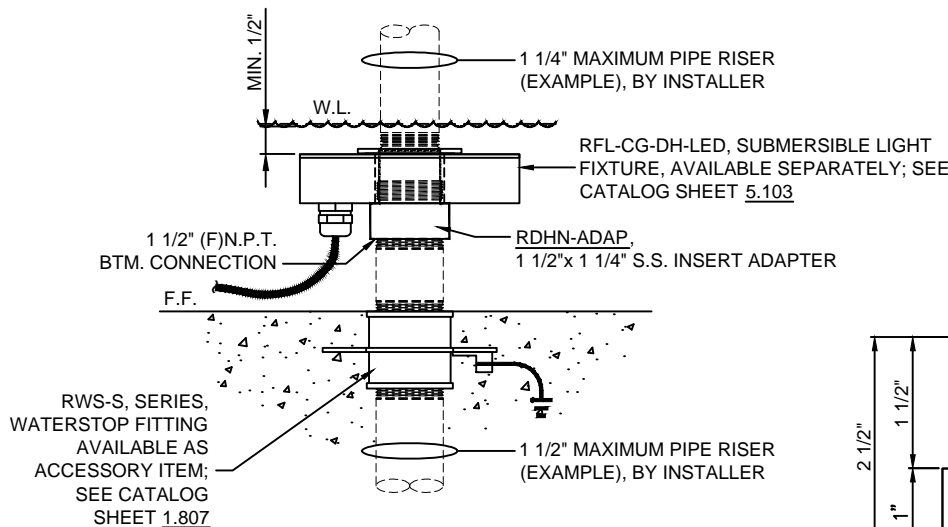


**RDHN-ADAP, THREADED ADAPTER  
FOR RFL-DH-LED 'DONUT HOLE'  
SUBMERSIBLE LED LIGHT FIXTURE**

(877) 794-1802

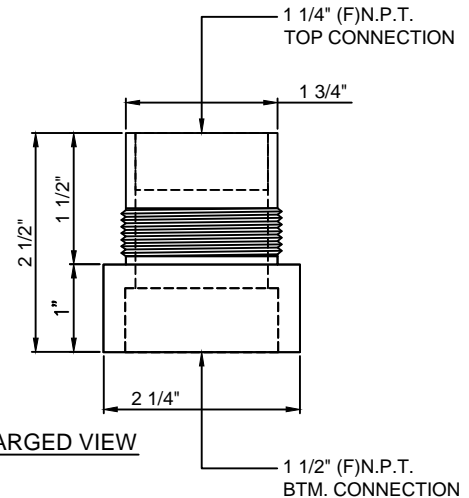


**PLAN VIEW**



**ELEVATION**

**APPLICATION**



**ENLARGED VIEW**

**SPECIFICATION DATA:** Threaded adapter fitting machined from type 303 stainless steel with 1 1/2" (F)N.P.T. bottom connection and 1 1/4" (F)N.P.T. top connection.

**DESIGN/APPLICATION DATA:** This adapter is used for applications where riser mounting of the RFL-DH-LED, 'Donut Hole' LED light fixture is required. Adapter threads into the straight (non-tapered) threads at fixture bottom, to provide a pipe (N.P.T.) thread and basically acts as a reducer coupling for through piping to a spray nozzle; brass or stainless steel reducer bushings (provided By Installer) may be used at either end of adapter when a smaller pipe riser size is required.

**NOTE:** Due to our continuing product improvement, Roman Fountains reserves the right to change the specifications without notice.

**DRAWING NO.  
5.105**