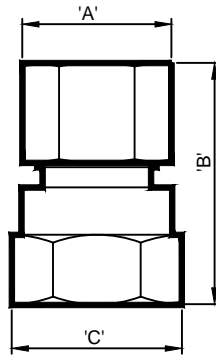




(877) 794-1802

**RCSR SERIES, BRASS CORD
STRAIN RELIEF FITTING**



RCSR-F SERIES

For use with RCSF Conduit Slab Fitting with Cord Seal (See Catalog Sheet 5.326).

TECHNICAL DATA					
MODEL	N.P.T. CONN.	DIMENSION 'A'	DIMENSION 'B'	DIMENSION 'C'	FOR USE WITH CORD SIZE
RCSR-050-F	1/2" FEMALE	7/8"	1 3/8"	1"	#16/3 OR #18/3
RCSR-075-F	3/4" FEMALE	1 1/2"	1 7/16"	1 9/32"	#10/3

- NOTES:** 1. 'B' dimension may vary, depending upon how much cap is tightened.
2. All measurements are "overall" outside dimensions, point-to-point.

SPECIFICATION DATA: Two-piece machined naval brass construction, with neoprene cord grommet and brass or nylon friction ring. Fittings available female connections with, 1/2" or 3/4" N.P.T. threads.

NOTE: Due to our continuing product improvement, Roman Fountains reserves the right to change the specifications without notice.

DESIGN/APPLICATION DATA: Roman Fountains RCSR Series cord strain relief fittings are designed to secure light fixture and submersible pump cords while providing a positive threaded connection to brass waterstop fittings. These fittings are typically used for routing submersible cables through fountain pool slabs and walls when used with a (accessory) RWS-L Series, waterstop fitting; (See catalog sheet [1.806](#) or [5.326](#))

**DRAWING NO.
5.324**