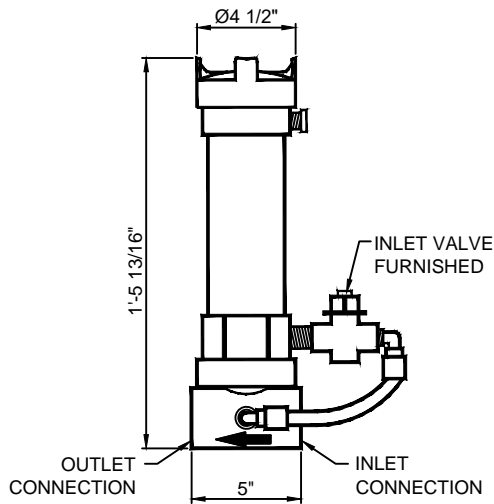


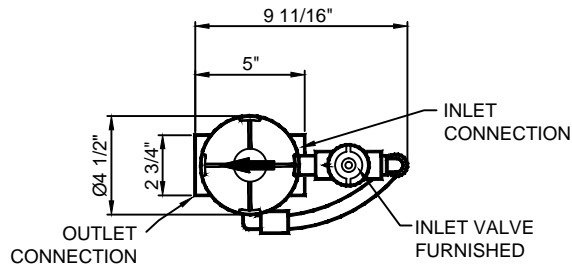


RBU-320-IL, IN-LINE BROMINE/CHLORINE FEEDER

(877) 794-1802



ELEVATION



PLAN VIEW

TECHNICAL DATA				
MODEL NO.	POOL CAP. BROMINE/CHLORINE	TANK CAP. BROMINE/CHLORINE	MAXIMUM OPERATING PRESSURE	CONNECTIONS
RBU-320-IL	4K MAX.	4 lbs.	50 P.S.I.	*1-1/2"/2" PVC

* 2" X 1-1/2" FTG X SOCKET REDUCING BUSHINGS INCLUDED.

NOTES:

1. Use a quality pool test kit on a regular basis to monitor and maintain safe chemical levels within the fountain pool.
2. DO NOT install feeder into copper plumbing systems; pipe damage could result.
3. Feeder is designed for use with bromine tablets, or sticks, or trichlor: Never mix these chemicals.
4. Chemicals are "BY OTHERS".

SPECIFICATION DATA: In-line Bromine/Chlorine Feeder, consisting of: sanitizer erosion tank of heavy wall plastic construction with threaded lid and 'O'-ring gasket, integral flow pick-up & manual metering valve. 1-1/2" or 2" PVC (socket) connections.

NOTE: Due to our continuing product improvement, Roman Fountains reserves the right to change the specifications without notice.

DESIGN/APPLICATION DATA: Roman Fountains RBU-320-IL In-line Bromine/Chlorine feeder is designed primarily for use on new projects as well as in small existing fountains and reflective pools requiring algae and bacteria control. The pressure operated system in conjunction with a calibrated inlet valve, allows a constant measured chemical flow.

DRAWING NO.
6.201