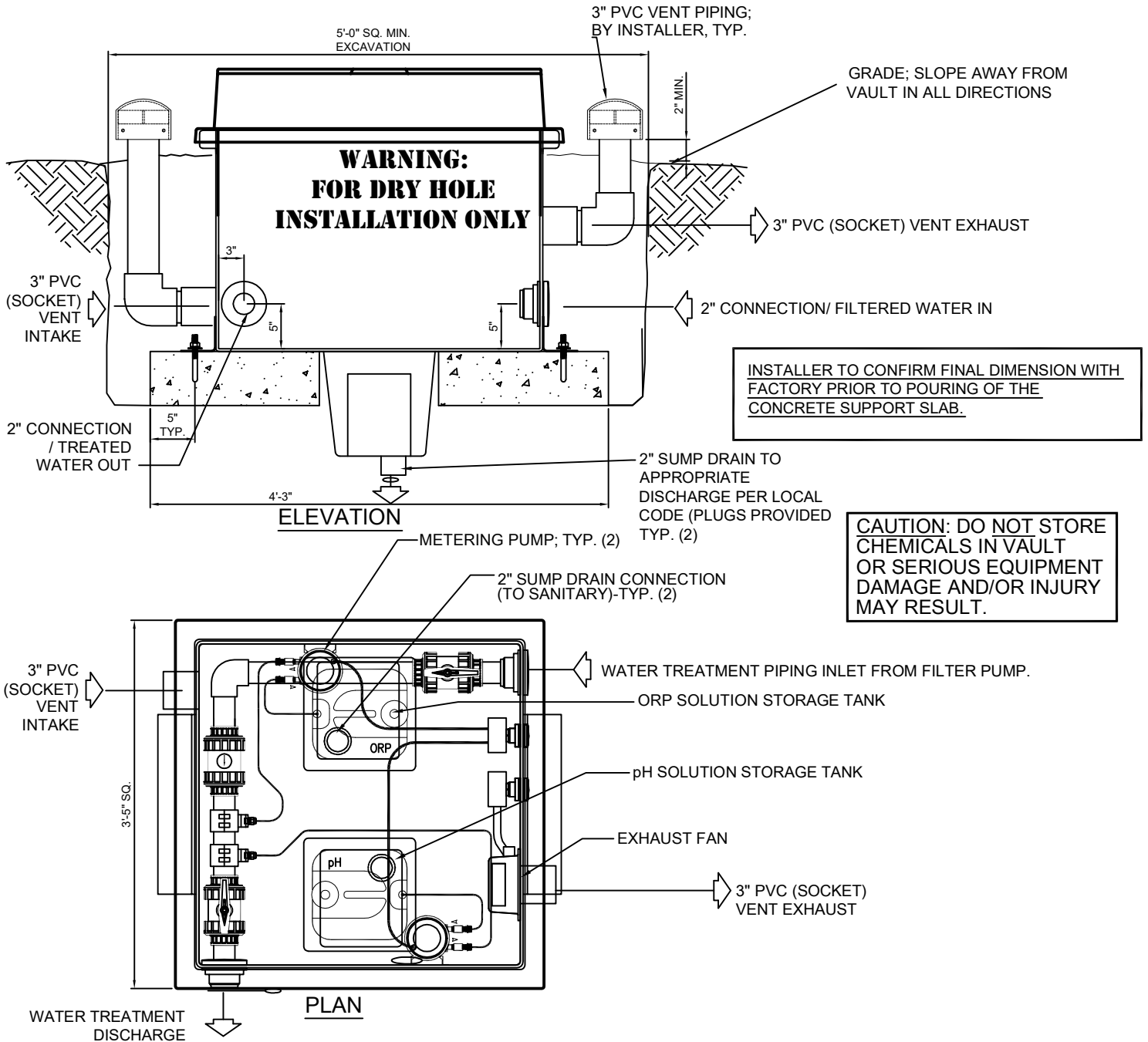




(877) 794-1802

RDP-1-WTS WATER TREATMENT VAULT



SPECIFICATION DATA: Direct Burial Water Treatment Vault, consisting of a 3'-5" Sq. x 2'-8" deep heavy duty FRP vault with white gel-coat interior and brown gel-coat exterior, furnished with fiberglass reinforced plastic lid with stainless steel piano hinge attachment, and locking device. Vault contains two (2) integral sumps with 2" drain connections (plugged), two (2) single head adjustable rate chemical metering pumps and two (2) 5 gallon chemical solution storage tanks (for pH and ORP solutions); 3" vent connections with 115 CFM vent fan. Unit is pre-wired, pre-plumbed (Schedule 80) PVC and factory tested, prior to shipment.

Power requirement: 120 volt, single phase + GND.

DESIGN/APPLICATION DATA: This water treatment vault is intended for use in conjunction with a 'confined space' type display vault, to remove the chemical safety hazard and potential equipment damage that could result due to potential release of corrosive fumes. This vault is designed specifically for treatment of 'participatory type' water features where a filtration system, dual-point controller, pH/ORP probes, flow cell, etc., are housed within one of our larger display vaults, built specifically for dry deck 'water play' type features.

NOTE: Due to our continuing product improvement program, Roman Fountains reserves the right to change the specifications w/o notice.

DRAWING NO.
6.401