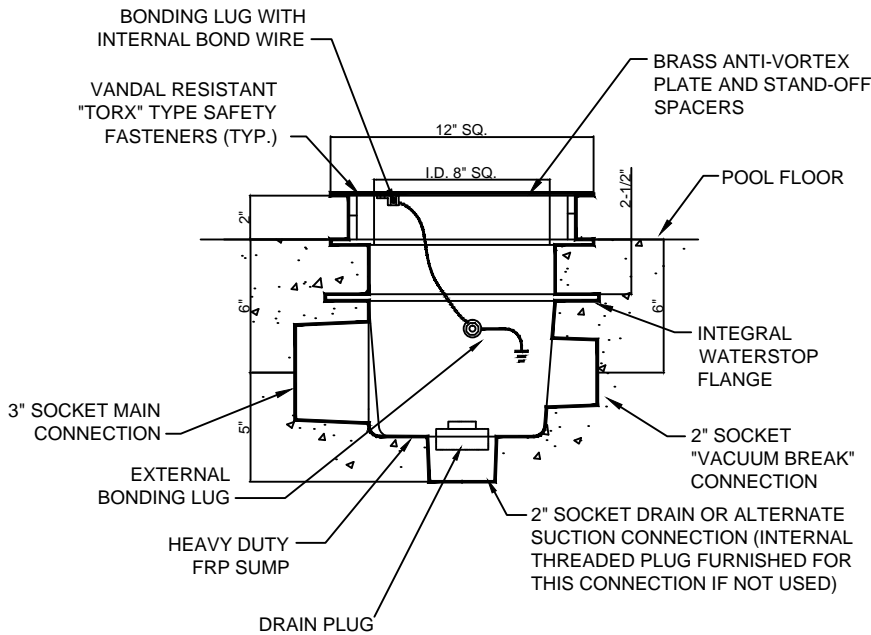




# RAVS-1200-F, 12" SQ. ANTI-VORTEX PLATE AND SUMP ASSEMBLY

(877) 794-1802



RECOMMENDED MAXIMUM FLOW RATE:  
120 GPM @ 16" WATER DEPTH

96 SQ. INCH OPEN AREA = .510 FPS SUCTION VELOCITY @ 120 GPM.

**SAFETY NOTICE**  
THE ANTI-VORTEX PLATE MUST BE FIRMLY IN PLACE AND SECURELY FASTENED TO SUMP BODY AT ALL TIMES TO GUARD AGAINST THE POSSIBILITY OF SUCTION ENTRAPMENT. NEVER REMOVE PLATE UNLESS FOUNTAIN IS SHUT OFF AND COMPLETELY DRAINED.

**SPECIFICATION DATA:** Heavy Duty FRP sump with integral waterstop flange, 3" side, 2" bottom and 2" "vacuum break" (socket) connections. (The 2" interior bottom connection shall be provided with a 2" threaded male plug.) Solid brass 3/16" thick anti-vortex plate with brass spacers "TORX" type S.S. vandal resistant safety fasteners and wrench. Assembly also includes a sump basket of perforated stainless steel with 1/2" Ø openings.

**NOTES:** 1. If this device is the primary suction source for the recirculation system install using the "vacuum break" connection or, use two (2) minimum, to lesson the risk of suction entrapment.  
2. Due to our continuing product improvement, Roman Fountains reserves the right to change the specifications without notice.

**DESIGN/APPLICATION DATA:** Roman Fountains RAVS-1200-F, anti-vortex plates and sumps are designed for use in fountain and reflecting pools using remote pumping systems. Available in a range of capacities and sizes, they provide a pre-fabricated mechanism for returning water from pool to pump, eliminating vortexing (drawing air into the pump) and promoting efficient re-circulation.

DRAWING NO.  
**6.502**