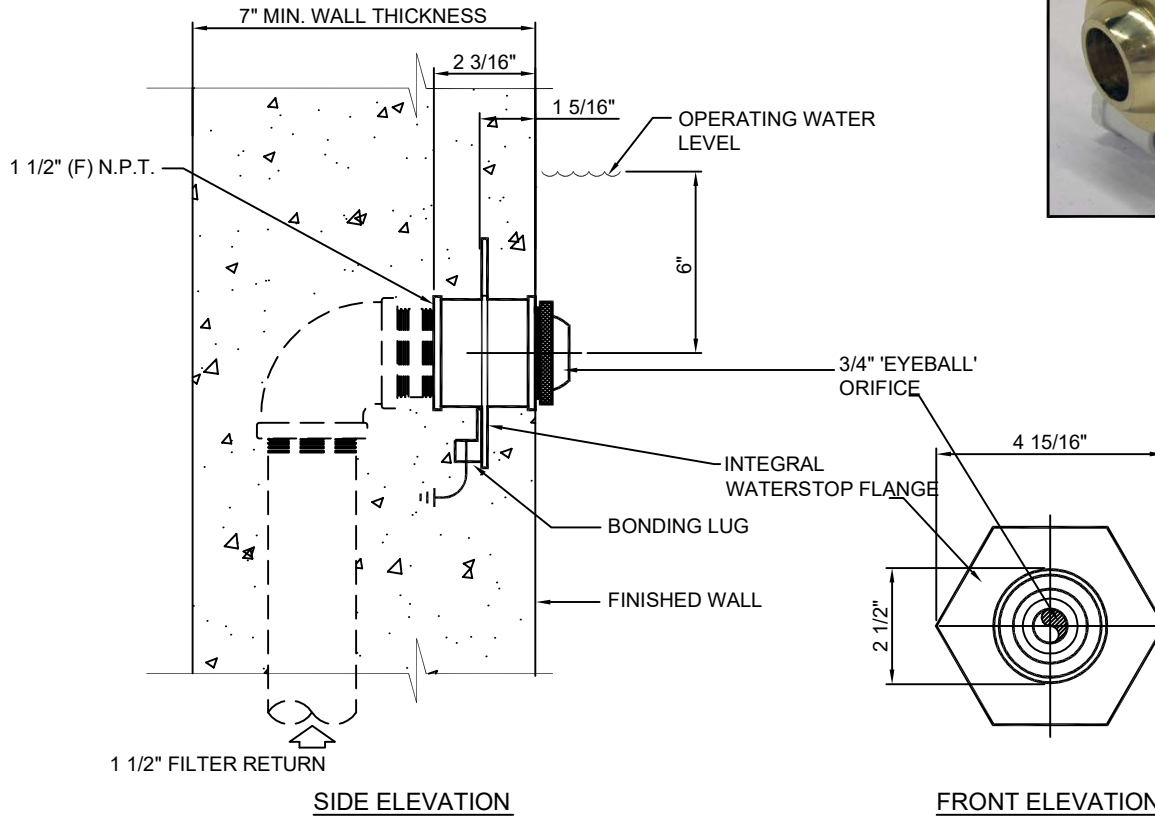


(877) 794-1802



**NOTE: INSTALL WATERSTOP FLANGE  
FACE FLUSH TO FINISHED WALL.**

TECHNICAL AND HYDRAULIC DATA		
MODEL NO.	CONNECTION SIZE	MAXIMUM FLOW RATE
REF-150-WS	1-1/2"	30 GPM

**SPECIFICATION DATA:** Adjustable 'Eyeball' Inlet Fitting; consisting of a machined brass body with integral waterstop flange, bonding lug, machined brass 'eyeball' with 3/4" orifice, retaining ring and 1-1/2" (F) N.P.T. connection, standard natural brass finish.

**NOTE:** Due to our continuing product improvement, Roman Fountains reserves the right to change the specifications without notice.

**DESIGN/APPLICATION DATA:** Roman Fountains REF-150-WS, adjustable eyeball inlet fitting is designed for use in fountains and reflecting pools as a discharge point for filtered water, or an inlet point for makeup water.

DRAWING NO.  
**6.504**