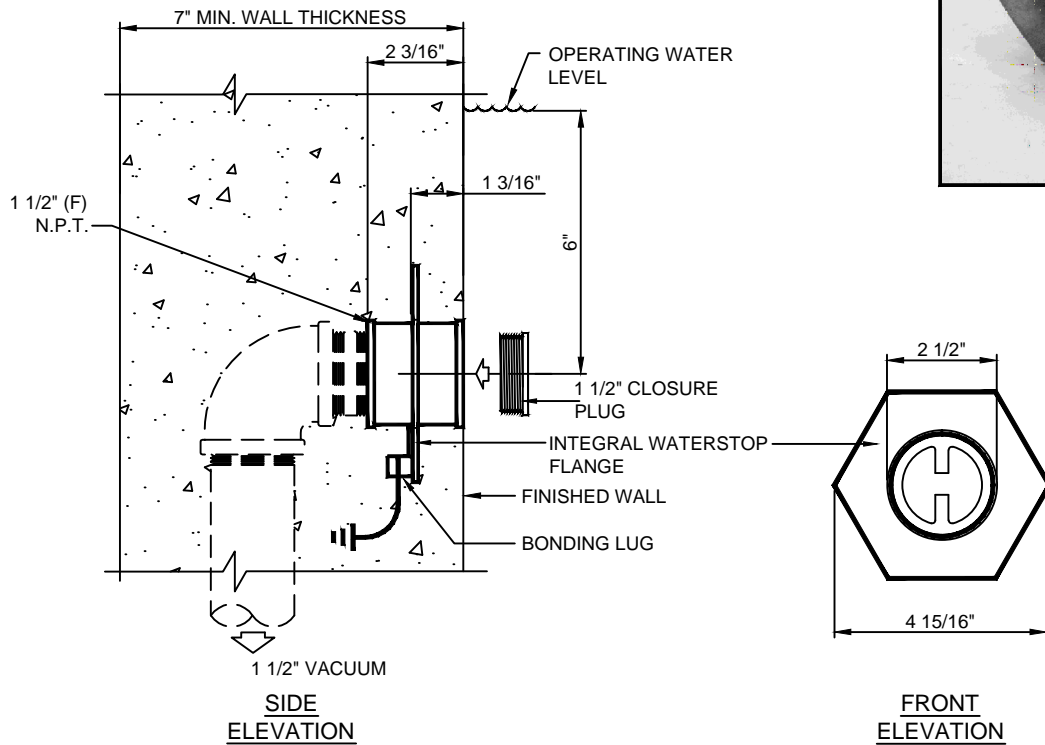
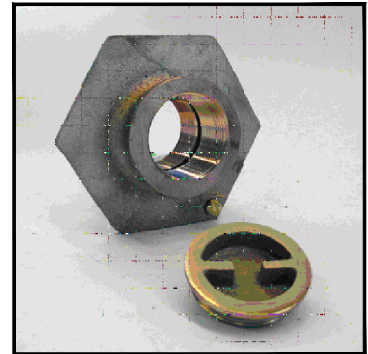




(877) 794-1802

**RVF-150-WS,
VACUUM FITTING**



**NOTE: INSTALL WATERSTOP FLANGE
FACE FLUSH TO FINISHED WALL.**

TECHNICAL AND HYDRAULIC DATA		
MODEL NO.	CONNECTION SIZE	MAXIMUM FLOW RATE
RVF-150-WS	1-1/2"	30 GPM

SPECIFICATION DATA: Vacuum Fitting; consisting of a machined brass body with integral waterstop flange, bonding screw, machined brass closure plug, 1-1/2" (F) N.P.T. connection, standard natural bronze finish.

NOTE: Due to our continuing product improvement, Roman Fountains reserves the right to change the specifications without notice.

DESIGN/APPLICATION DATA: Roman Fountains RVF-WS Series vacuum return fitting is designed for use in fountains and reflecting pools as a suction point for the filtration vacuum system.

**DRAWING NO.
6.510**