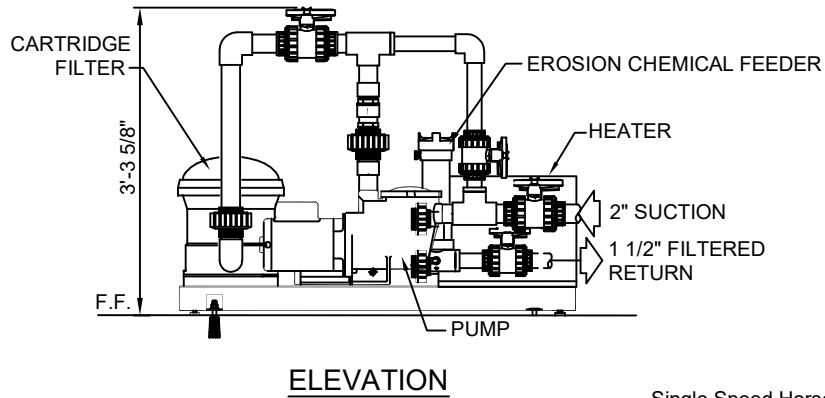
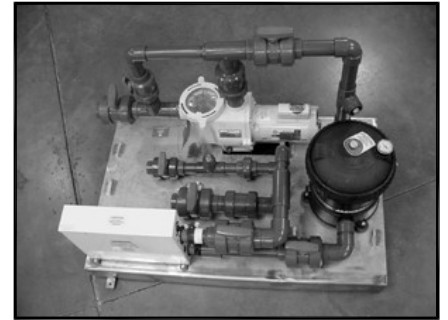
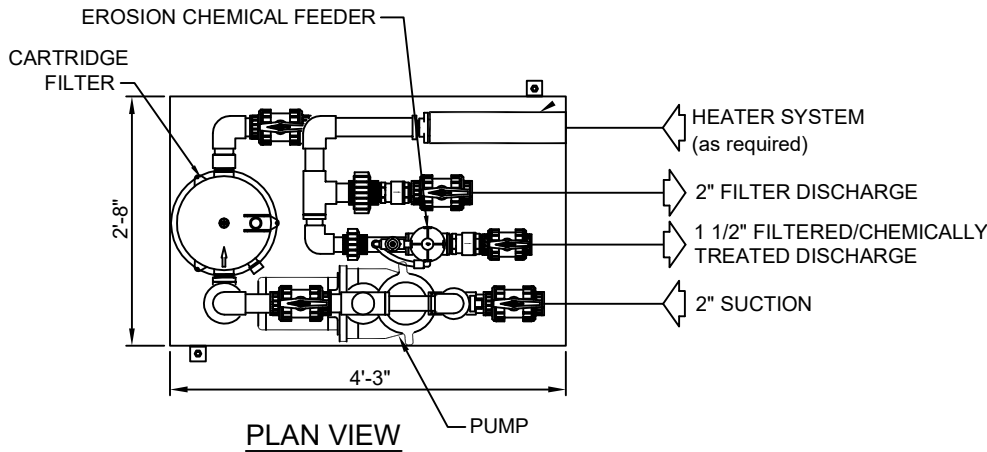


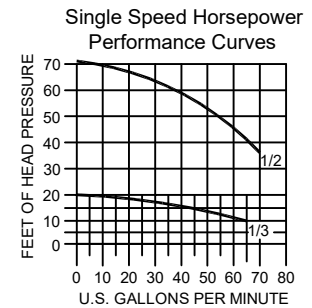


(877) 794-1802

# RSM-1-RBU-RHU SERIES, BAPTISMAL FONT SKID SYSTEM



TECHNICAL DATA		
MODEL NO.	PUMP HP	REQUIRED SYSTEM POWER SUPPLY
RSM-1-033-RBU-RHU	1/3	115/230V, Single Phase
RSM-1-050-RBU-RHU	1/2	115/208-230V, Single Phase



**SPECIFICATION DATA :** Baptismal Font Skid System with Heater Unit (size as required consisting of: Reinforced 11 gauge, mill finish stainless steel platform with adjustable glides, measuring approx. 2'-8" wide x 4'-3" long. System shall include self-priming pump with integral suction strainer; RCCF-050, 50 S.F. cartridge filter with pressure gauge and air-relief valve; erosion type, in-line chemical feeder with metering valve and necessary fittings; RHU-Series, electric heater unit with on-board heater controls; pump motor circuit breaker/load center and timeclock; necessary on-skid piping, fittings, manual regulating/isolation valves and check valves. Unit is pre-plumbed (Schedule 80 PVC) and factory tested, prior to shipment. Power requirement as noted by model number, above.

**NOTES:** 1. Heater requires a separate dedicated 230V, Single Phase Circuit. Heater does NOT route through pump breaker/timeclock. Dual heaters run in parallel may be required.

\* 208V, Single Phase heater power may result in heater output downgrade.

2. Allow adequate space around entire skid system for servicing, maintenance and electrical code clearances.
3. Provide adequate ventilation (min. 25 CFM/H.P.) and floor drain.
4. Valves on output side of heater are for 'balancing' purposes only; do not shut off.
5. Due to continuing product improvement program, Roman Fountains reserve the right to change specification without notice.