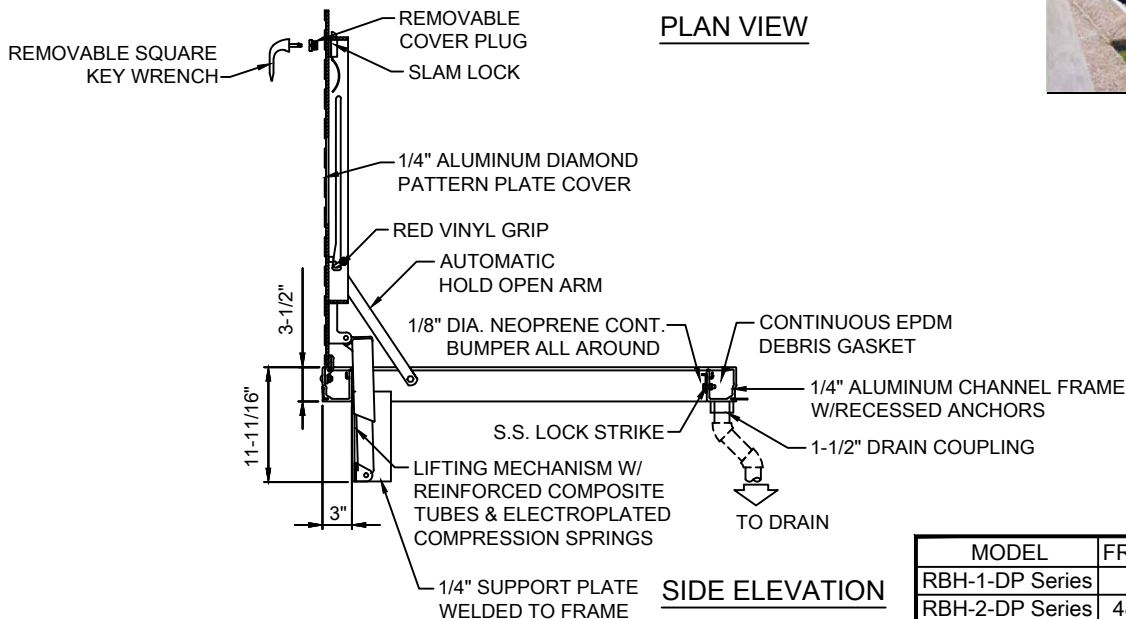
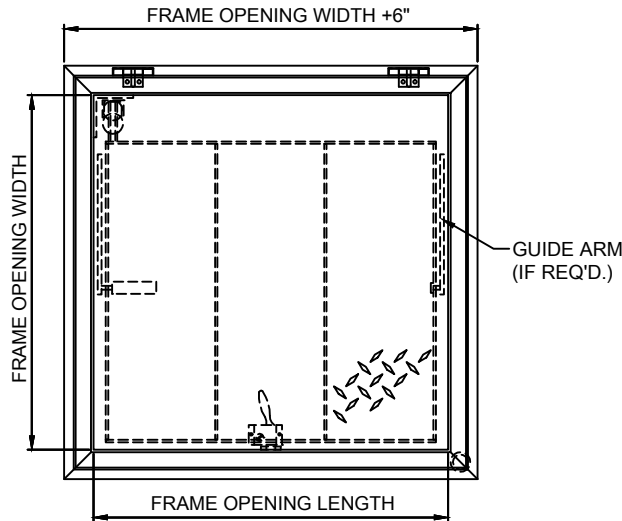




(877) 794-1802

RBH-DP SERIES, DIAMOND PLATE VAULT HATCHWAY



MODEL	FRAME OPENING DIMS.
RBH-1-DP Series	36"x36"
RBH-2-DP Series	48"x54" (HINGE SIDE)

SPECIFICATION DATA:

Material: Cover and frame are 1/4"(6.36mm) aluminum

Cover: Diamond pattern tread plate reinforced for 300 psf (1464 kg/m2) live load

Frame: Extruded aluminum channel frame with bend down anchor tabs around the perimeter. 1-1/2" (38mm) drain coupling is welded under the frame for a pipe connection to a dry well or disposal system.

Gasket: EPDM gasket mechanically attached to the frame reduces the amount of dirt and debris that may enter the channel frame.

Hinges: Heavy forged aluminum hinges with 1/4" (6.3mm) type 316 stainless steel hinge pins.

Latch: Type 316 stainless steel slam lock with fixed interior handle and removable exterior turn/lift handle. Latch release is protected by a flush, gasketed, removable screw plug.

Lift Assistance: Compression spring operators enclosed in telescopic tubes. Automatic hold-open arm with grip handle release.

Finish: Mill finish aluminum with bituminous coating applied to the exterior of the frame.

Hardware: Engineered composite compression spring tubes. Steel compression springs with electrocoated acrylic finish. All other components of door are aluminum or Type 316 stainless steel.

NOTE: Due to our continuing product improvement program, Roman Fountains reserves the right to change the specifications without notice.

DRAWING NO.
7.303