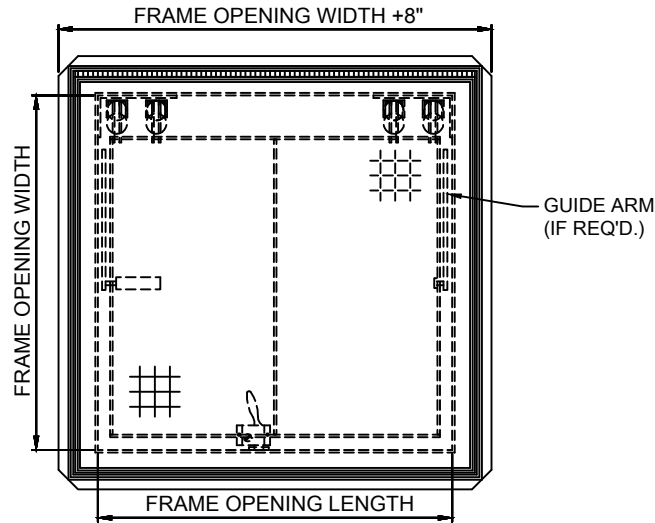


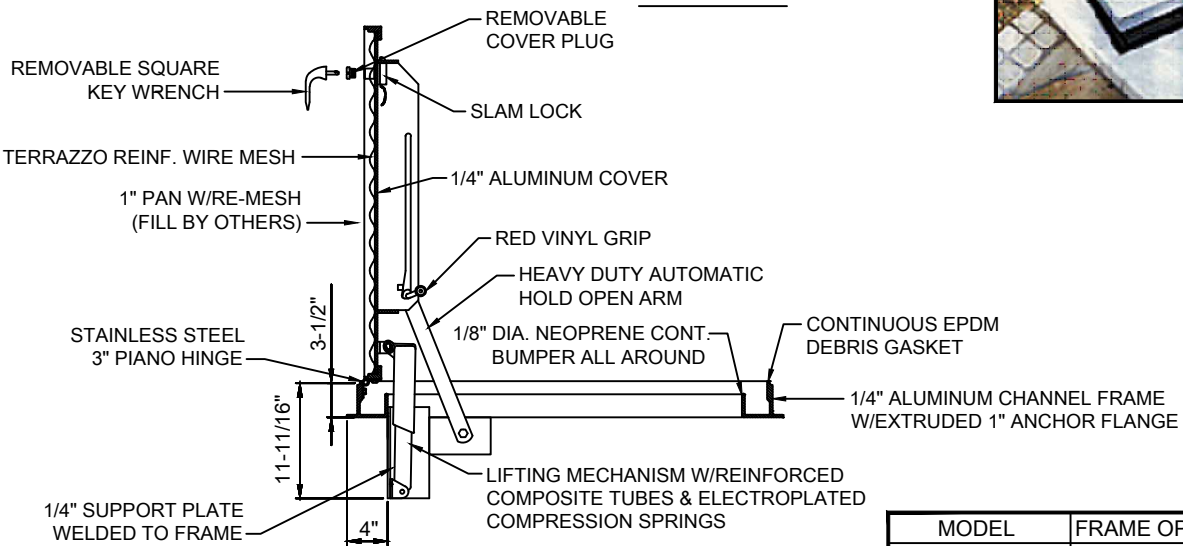
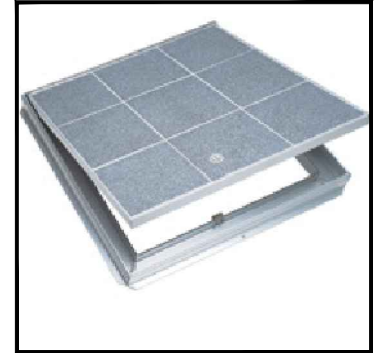


(877) 794-1802

RBH-TS SERIES, TILE-SET VAULT HATCHWAY



PLAN VIEW



SIDE VIEW

MODEL	FRAME OPENING DIMS.
RBH-1-TS Series	36"x36"

SPECIFICATION DATA:

Material: Cover and frame are 1/4" (6.35mm) aluminum

Cover: Smooth plate reinforced for 150 psf (732 kg/m2) live load. Cover designed with 1" (25.4mm) fillable pan for field installation of architectural flooring material (specify flooring material including type, thickness, and weight).

Frame: Extruded aluminum frame with built in anchor flange around the perimeter.

Hinges: Continuous heavy-duty type 316 stainless steel hinge.

Latch: Type 316 stainless steel slam lock with fixed interior handle and removable exterior turn/lift handle. Latch release is protected by a flush, gasketed, removable screw plug.

Lift Assistance: Compression spring operators enclosed in telescopic tubes. Automatic hold-open arm with grip handle release.

Finish: Mill Finish aluminum with a bituminous coating applied to the exterior of the frame.

Hardware: Engineered composite compression spring tubes. Steel compression springs with electrocoated acrylic finish.

Type 316 Stainless steel hinges. All other hardware is zinc plated/chromate sealed.

NOTE: Due to our continuing product improvement program, Roman Fountains reserves the right to change the specifications w/o notice.

DRAWING NO.
7.304