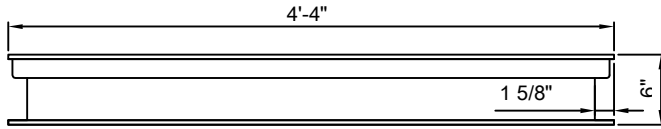


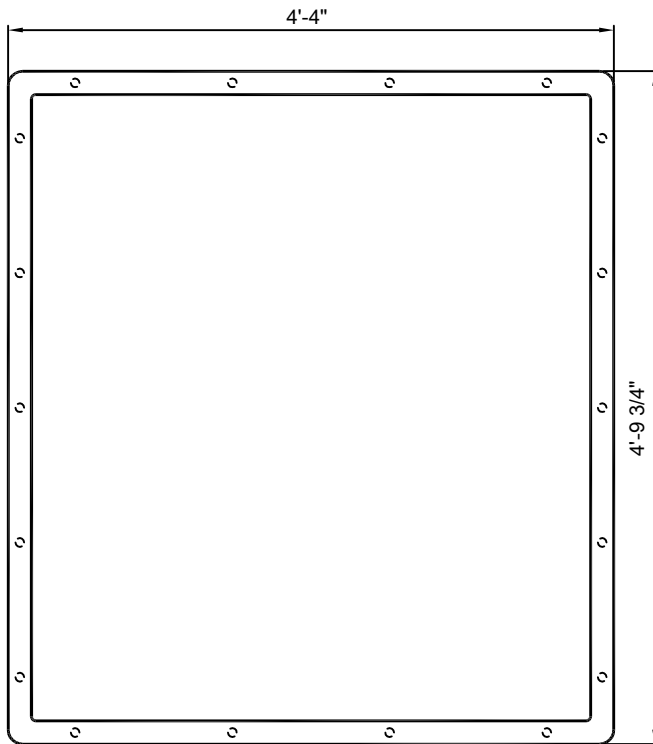
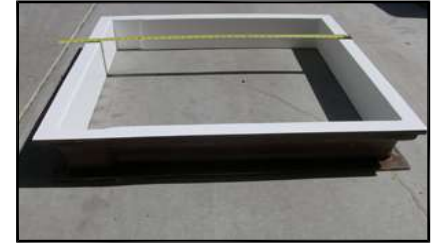


(877) 794-1802

RDP2-EX, DIRECT BURIAL VAULT HATCH EXTENSION

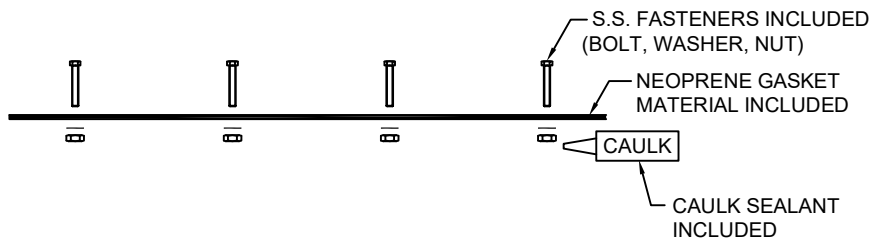
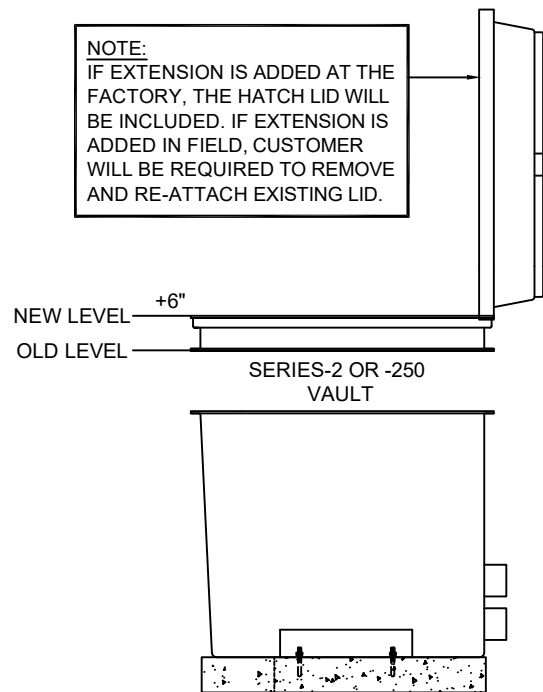


ELEVATION



PLAN

NOTE:
IF EXTENSION IS ADDED AT THE FACTORY, THE HATCH LID WILL BE INCLUDED. IF EXTENSION IS ADDED IN FIELD, CUSTOMER WILL BE REQUIRED TO REMOVE AND RE-ATTACH EXISTING LID.



NOTE :HATCH EXTENSIONS CANNOT BE 'STACKED'; SINGLE EXTENSION ONLY!

SPECIFICATION DATA: Direct Burial Pump Vault Hatch Extension; consists of a 4'-4" x 4'-9 3/4" x 6" deep FRP vault hatch extension with white gel coat interior and brown gel-coat exterior. Hatch extension complete with flange gasket, S.S. flange fasteners and caulk sealant.

APPLICATION DATA: RDP2-EX, Hatch Extensions can be mounted to Roman Fountains Series-2, and 250 vaults to raise the vault integral hatch by 6", to offset grade changes, or assist with positive drainage away from the vault opening.

NOTE: Due to our continuing product improvement program, Roman Fountains reserved the right to change the specifications without notice.

DRAWING NO.
7.307