



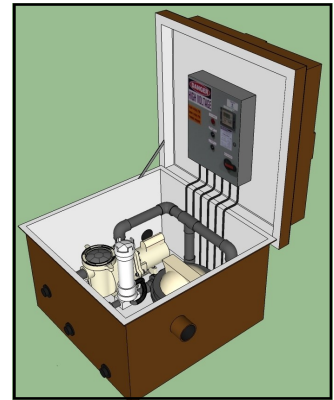
## RDP SERIES

Roman Fountains RDP Series fountain equipment vaults are designed and engineered as direct burial equipment rooms for fountain and water feature applications.

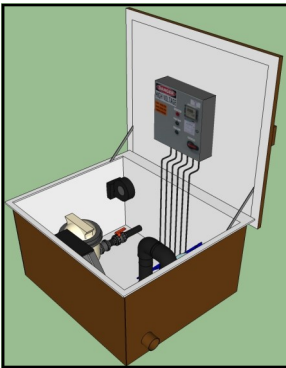
All equipment is factory assembled in a high strength water resistant fiberglass reinforced enclosure with an access hatchway. The RDP Series equipment vault provides the end user with a convenient, cost effective, single source

### RDP SERIES 1

- 3'-5" x 3'-5" x 2'-8" deep
- 1/2 HP to 3 HP fountain pump available
- Flow rates to 160 GPM
- 50 sq. ft. cartridge filter & sanitizer
- Lockable FRB hatchway with safety hold open arm
- Lid-mounted timeclock/breaker panel or UL control panel
- Hydraulically and electrically tested before shipment to jobsite



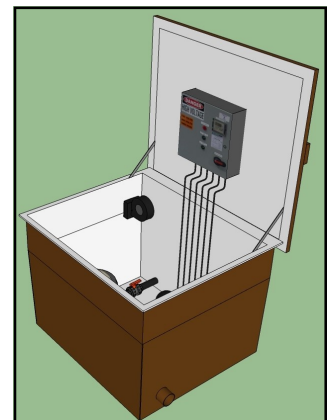
### RDP SERIES 2



- 4'-6" x 4'-9" x 3'-2" deep
- 3 HP to 7.5 HP fountain pump available
- Flow rates to 425 GPM
- 75 sq. ft. cartridge filter & sanitizer
- Lockable FRB hatchway with safety hold open arm
- Includes UL control panel with digital timeclock and main disconnect
- Hydraulically and electrically tested before shipment to jobsite

### RDP SERIES 2.5

- 4'-6" x 4'-9" x 4'-2" deep
- 3 HP to 7.5 HP fountain pump available
- Flow rates to 425 GPM
- 100 sq. ft. cartridge filter & sanitizer
- Lockable FRB hatchway with safety hold open arm
- Includes UL control panel with digital timeclock and main disconnect
- Hydraulically and electrically tested before shipment to jobsite



[www.romanfountains.com](http://www.romanfountains.com) | [info@romanfountains.com](mailto:info@romanfountains.com)

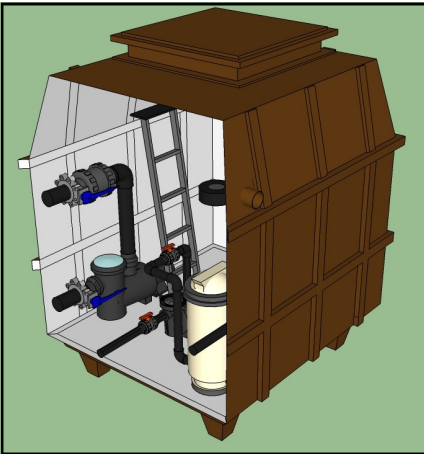
Atlanta Office: 9875 Medlock Bridge Parkway, Suite 250 Johns Creek, GA 30022 877-794-1802  
Sarasota Office: 1125 Commerce Blvd N, Sarasota, FL 34275 941-484-8224

## RDP SERIES 3S

- 5'-7" x 6'-4" x 5'-6" deep
- 3 HP to 15 HP fountain pump and 1/2 HP to 3 HP filter pumps available
- Flow rates to 700 GPM
- Sand or cartridge filter & sanitizer
- Lockable FRB hatchway with safety hold open arm
- Includes UL control panel with digital timeclock and main disconnect
- Hydraulically and electrically tested before shipment to jobsite



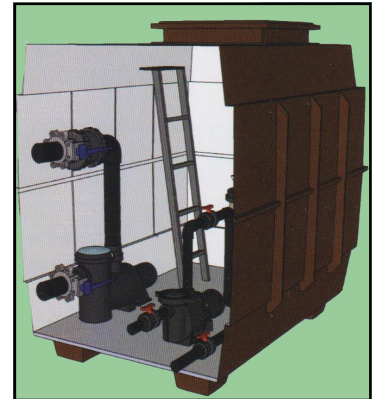
## RDP SERIES 3



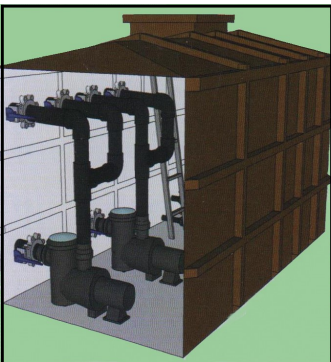
- 5'-7" x 6'-4" x 8'-0" deep
- 3 HP to 20 HP display pump and 1/2 HP to 3 HP filter pumps available
- Flow rates to 750 GPM
- Sand or cartridge filter & sanitizer
- Lockable FRB hatchway with safety hold open arm
- Includes UL control panel with digital timeclock and main disconnect
- Hydraulically and electrically tested before shipment to jobsite

## RDP SERIES 4

- 6'-10" x 8'-8" x 7'-0" deep
- 5 HP to 30 HP display pump and 1/2 HP to 3 HP filter pumps available
- Flow rates to 1800 GPM
- Sand or cartridge filter & sanitizer
- Lockable FRB hatchway with safety hold open arm
- Includes UL control panel with digital timeclock and main disconnect
- Hydraulically and electrically tested before shipment to jobsite



## RDP SERIES 5



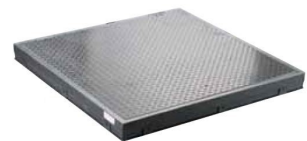
- 7'-10" x 14'-6" x 9'-0" deep
- 1/2 HP to 50 HP display and/or filter pumps available
- Flow rates to 3500 GPM
- Sand or cartridge filter & sanitizer
- Lockable FRB hatchway with safety hold open arm
- Includes UL control panel with digital timeclock and main disconnect
- Hydraulically and electrically tested before shipment to jobsite



Landscape Hatch



Tile-Set Hatch



Diamond Plate Hatch