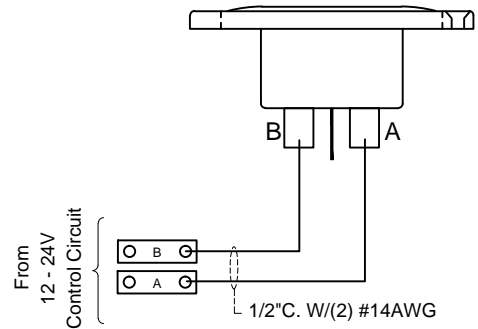
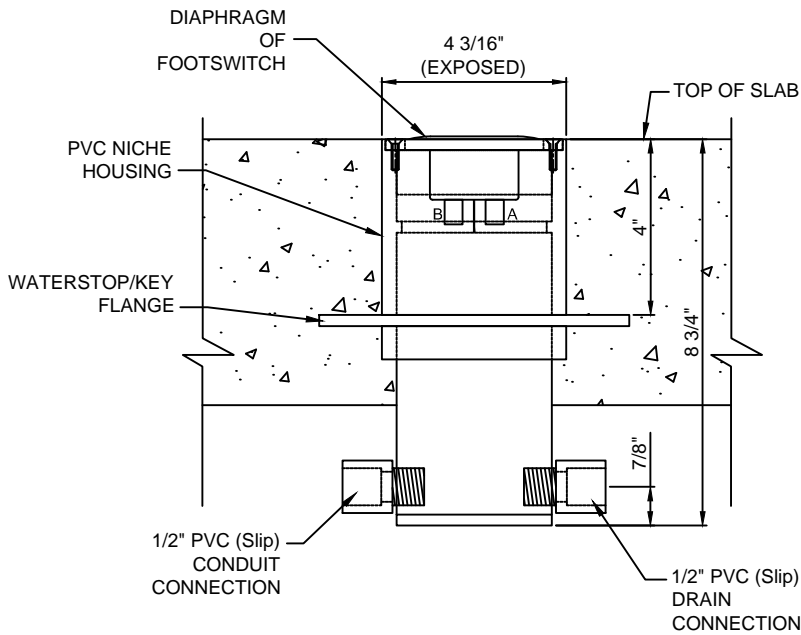
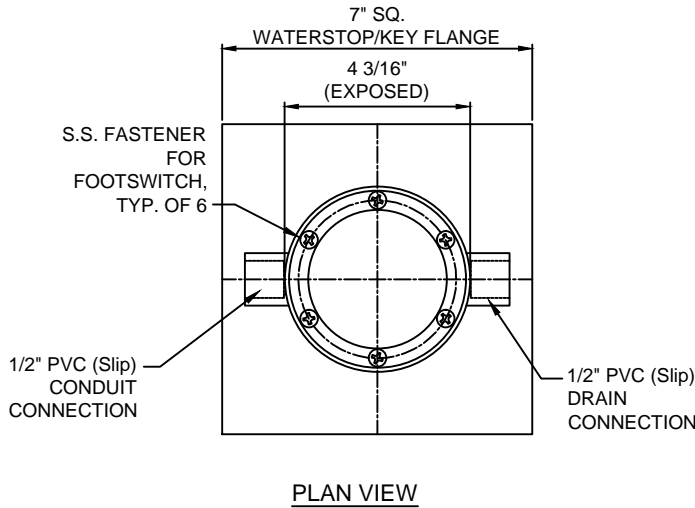




(877) 794-1802

# RFPB, FLUSH MOUNT PUSH-BUTTON FOOT SWITCH



**NOTES:**

1. When adding the two #14AWG switch wires, allow at least two feet of extra wire inside the niche housing to ease the installation and removal of the footswitch.
2. After the wiring connection has been made, seal the conduit entry with duct seal or rubber silicon.
3. Due to our continuing product improvement program, Roman Fountains reserves the right to change the specifications without notice.

**SPECIFICATION DATA:** Flush-Mount Push Button Activator, consists of a heavy-duty weather resistant foot switch with a U.V. stabilized waterproof diaphragm, nickel-plated copper contacts, 4" diameter chrome-plated bronze mounting bezel with stainless steel fasteners, PVC niche housing with integral waterstop flange, 1/2" PVC slip conduit connection and 1/2" slip drain connection.