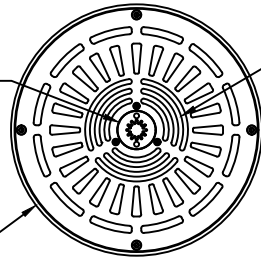


SPLASHLIGHT-S-SH-24VDC, SEQUENCING NOZZLE/LED LIGHT ASSEMBLY SLAB HANGER

NOZZLE TYPE AS SPECIFIED;
(SEE OPTIONS ON SHEETS
1.716)



PLAN VIEW

RFL-DH-24VDC Series, 'DONUT HOLE' LIGHT FIXTURE (Beneath Grate)

**24VDC
LED**

RFL-DH-24VDC SERIES
'DONUT HOLE' LIGHT FIXTURE.
See Catalog Cut Sheet 5.103a



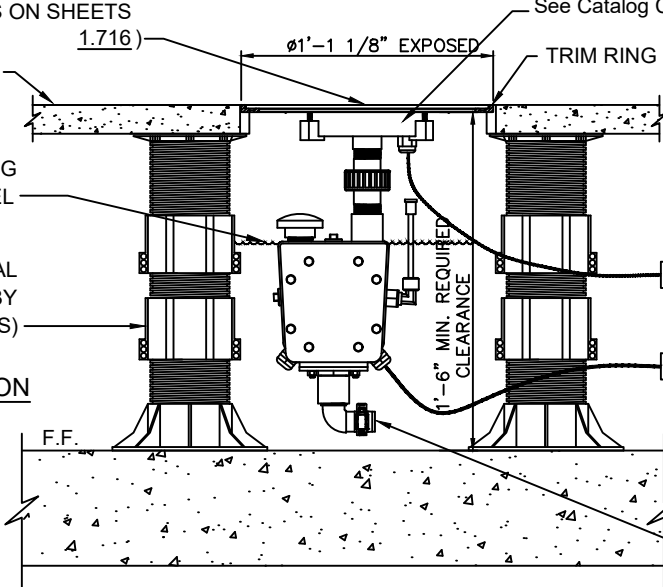
NOZZLE TYPE AS SPECIFIED;
(SEE OPTIONS ON SHEETS
1.716)

PAVER UNIT, TYP.

OPERATING
WATER LEVEL

PEDESTAL
ASSEMBLY, (BY
OTHERS)

ELEVATION



TRIM RING INCLUDED

POWER CORD FOR LIGHT
TO RJB-SERIES JUNCTION
BOX; AVAILABLE AS
ACCESSORY

POWER CORD FOR
WATERSWITCH TO
RJB-SERIES JUNCTION
BOX; AVAILABLE AS ACCESSORY

1" NOZZLE HOSE
CONNECTION



3D IMAGE

NOZZLE COVER		HYDRAULIC DATA					
		SPRAY HEIGHT					
		2'-0"	4'-0"	6'-0"	8'-0"	10'-0"	12'-0"
JC SJ AJ TT	GPM	8.6	11.7	14.0	15.7	18.2	19.6
	HEAD	29.0'	38.0'	47.0'	54.0'	65.0'	74.0'
APJ-50	GPM	8.0	10.5	12.5	14.5	16.5	18.0
	HEAD	28.0'	34.0'	41.0'	49.0'	58.0'	66.0'

NOZZLE COVER		HYDRAULIC DATA						
		SPRAY HEIGHT						
		2'-0"	4'-0"	6'-0"	8'-0"	10'-0"	12'-0"	14'-0"
JC/L CJ	GPM	7.2	9.5	11.6	13.3	15.0	16.5	17.9
	HEAD	26.0'	30.0'	37.0'	43.0'	49.0'	55.0'	62.0'
APJ-38	GPM	7.0	9.5	12.0	13.5	15.5	16.5	18.0
	HEAD	29.5'	34.0'	39.0'	44.0'	49.0'	54.0'	60.0'

SPECIFICATION DATA: Hanger-Mounted, Nozzle/LED Light assembly shall be constructed of stainless steel with stainless fasteners and includes decorative stainless steel grate, 24 VDC fast-acting 'waterswitch' assembly with 19' of 18 AWG STW cable, RDHN-Series S.S. nozzle body with choice of nozzle cover (see Catalog Sheets 1.716 for spray patterns) and one (1) RFL-DH-LED-24VDC Series, 24VDC LED Light Fixture (available with WHITE or RGBW) with 25' of 18 AWG SJOW cable.

DESIGN/APPLICATION DATA: Hanger-Mounted Nozzle/LED Light assembly is water level independent and is available with one of six interchangeable nozzle spray patterns. Nozzle mechanism is capable of rapid switching performance when linked to a solid state sequencing controller. When used in groups, these nozzles can produce a variety of effects as nozzles are sequenced in various patterns and timed launches, plus the nozzles can produce varying stream heights when used in conjunction with a sequenced variable speed pump drive.

NOTES: 1. U.L. LISTED light fixture

2. For Nozzle Hydraulic Data, see tables above.

3. Due to continuing product improvement program, Roman Fountains reserves the right to change the specifications without notice.

IMPORTANT: FLUSH PIPING & REMOVE FOREIGN OBJECTS FROM NOZZLE FITTINGS PRIOR TO STARTUP. REMOVE NOZZLE(S) DURING FLUSH IF EXCESSIVE DEBRIS PRESENT