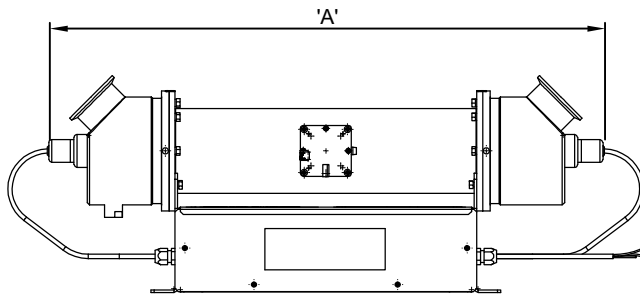


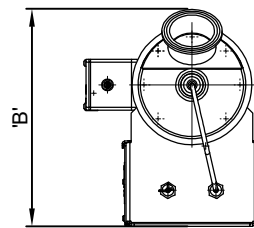


(877) 794-1802

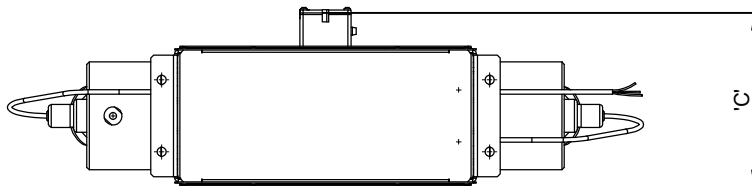
# RUV-N SERIES, NSF RATED ULTRAVIOLET SANITIZER/ CLARIFIER SYSTEM



ELEVATION



SIDE VIEW



PLAN VIEW

### TECHNICAL & HYDRAULIC DATA

| MODEL NO. | VOLTAGE          | CONN. SIZE | LAMP QUANTITY | WATTS | MAX. FLOW RATE GPM | DOSAGE AT 95% UVT (mJ/cm <sup>2</sup> ) | DIMENSION 'A' | DIMENSION 'B' | DIMENSION 'C' |
|-----------|------------------|------------|---------------|-------|--------------------|---|---------------|---------------|---------------|
| RUV-N-238 | 120/230v/50/60Hz | 1.5"       | 1             | 98    | 65                 | 40                                      | 39.9"         | 6.23"         | 8.2"          |
| RUV-N-322 | 120/230v/50/60Hz | 2"         | 1             | 98    | 100                | 40                                      | 23.2"         | 9.4"          | 7.4"          |
| RUV-N-328 | 120/230v/50/60Hz | 2"         | 1             | 150   | 138                | 40                                      | 30.1"         | 9"            | 7.4"          |
| RUV-N-338 | 120/230v/50/60Hz | 2"         | 1             | 154   | 200                | 40                                      | 40.1"         | 9"            | 7.4"          |
| RUV-N-428 | 120/230v/50/60Hz | 3"         | 2             | 235   | 226                | 40                                      | 30.6"         | 11.4"         | 7.9"          |
| RUV-N-438 | 120/230v/50/60Hz | 3"         | 2             | 308   | 375                | 40                                      | 40.6"         | 11.8"         | 6.0"          |

**SPECIFICATION DATA:** NSF Certified Ultraviolet Sanitizer; 120 or 230v, single-phase. Designed for flow rates between 65 gpm and 300 gpm. Average lamp life is 9,000 operating hours (dependent on on/off cycles). Unit can be mounted horizontally or vertically. No tools required for lamp change. Display/Control panel (10.5" x 9" x 4.5") included, remote control available. Model RUV-N-438 is EPA certified.

**NOTE:** Due to our continuing product improvement, Roman Fountains reserves the right to change the specifications without notice.

**DRAWING NO.**  
**6.307**